

**TANCO AUTOWRAP
400S8 / 500S8 MODEL 1994
OPERATORS HANDBOOK
AND
PARTS LIST
WD65-400-CS8 / 500-CS8-M0594**

GUARANTEE

Subject as hereunder provided, the Sellers undertake to correct either by repair, or at their election, by replacement any defect of material or workmanship which occurs in any of its goods within twelve months after delivery of such goods to first user, with the exception of contractors or commercial users when warranty period is six months. In respect of Autowraps the warranty period is for 12 months or 8000 bales whichever ever occurs first.

The term goods when used in this document means the article or articles described in invoice as sold by the sellers but does not include equipment or proprietary parts or accessories not manufactured by the sellers. The sellers, however, undertake to pass on so far as they legally can to the first user the benefit of any warranty given to the Sellers by the suppliers of such equipment, parts or accessories.

This understanding shall not apply to:

- (a) Any goods which have been sold by the first user.
- (b) Any goods which have been injured by unfair wear and tear, neglect or improper use.
- (c) Any goods the identification marks of which have been altered or removed.
- (d) Any goods which have not received the basic normal maintenance such as tightening of bolts, nuts, tines, hose connections and fittings and normal lubrication with the recommended lubricant.
- (e) The use of any product on tractors exceeding the recommended horsepower.
- (f) Any goods which have been altered or repaired other than on instruction or with the written approval of the Seller or to which any part not manufactured or having written approval by the Sellers have been fixed.
- (g) Any second-hand goods or part thereof.

Any allegedly defective part or parts returned to the Sellers must be sent carriage paid. No claim for repair or replacement will be entertained unless upon discovery of the alleged defect written notification is sent to the Sellers giving, at the same time, the name of the Buyer from whom the goods were purchased and the date of purchase together with full details of the alleged defect and the circumstances involved, also the serial number of the machine etc.,

The Sellers shall be under no liability to their Buyers and first and subsequent users of their goods or to any other person or persons for loss or damages howsoever arising in respect of either personal injuries or for arising out of, or in any way connected with or arising from the manufacturers sale, handling, repair, maintenance, replacement or use of its goods or the failure or malfunction of any of its goods.

Representation and/or warranties made by any person (including Buyers and employees and other representatives of the Seller) which are inconsistent or conflicting with these conditions are not binding upon the Sellers unless given in writing and signed by a Director of the Sellers.

CLAIMS

If you wish to make a claim under guarantee.

1. Immediately, stop using the machine.
2. List the details of the machine and damaged item, (as shown inside the front cover of this booklet.
3. Consult with your Tanco dealer (supplier) and have him forward your claim and the damaged item to Tanco.

INDEX**400S8 / 500S8 MODEL****PAGE NO.**

SAFETY INSTRUCTIONS	1/2
TECHNICAL SPECIFICATIONS	3
PRE DELIVERY INSTRUCTIONS	4/5/6
TRANSPORT INSTRUCTIONS	7
MACHINE IDENTIFICATION	7
PREPARATION OF A NEW MACHINE	8
HYDRAULIC CONNECTIONS	8
BALE WRAP CONTROLLER	9
BALE WRAP CONTROLLER FUNCTIONS	10
OPERATING INSTRUCTIONS	11
WARNING; LIFT ARM	12
FILM OVERLAP SYSTEM	13
SERVICE AND MAINTENANCE	14
FILM THREADING DIAGRAM	15
PRIMARY CHAIN DRIVE CHAIN TENSIONING SYSTEM	16
DRIVE BELT TENSIONING SYSTEM	17
FILM ADAPTOR OPERATING INSTRUCTIONS	18
HYDRAULIC CIRCUIT DIAGRAM 400 S8 MODEL (TRAILED)	19
HYDRAULIC CIRCUIT DIAGRAM 500 S8 MODEL (TRAILED)	20
HYDRAULIC COMPONENTS ILLUSTRATED 400 S MODEL (TRAILED)	21
PARTS LIST FOR ABOVE	21:1
HYDRAULIC COMPONENTS ILLUSTRATED 500 S MODEL (TRAILED)	22
PARTS LIST FOR ABOVE	22:1
ELECTRICAL COMPONENTS ILLUSTRATED	23
PARTS LIST FOR ABOVE	23:1
CONSTANT INDEXING DRIVE ASSY ILLUSTRATED	24
PARTS LIST FOR ABOVE	24:1
AUTOWRAP ILLUSTRATED (400S8/500S8 MODEL)	25
PARTS LIST FOR ABOVE	25:1
AUTOWRAP ILLUSTRATED (400S8/500S8 MODEL)	26
PARTS LIST FOR ABOVE	26:1
HYDRAULIC MOTOR DRIVE	27
PARTS LIST FOR ABOVE	27:1
LIFT ARM ASSEMBLY ILLUSTRATED (400S/500S MODEL)	28
PARTS LIST FOR ABOVE	28:1
FILM DISPENSING SYSTEM ILLUSTRATED (400S MODEL)	29
PARTS LIST FOR ABOVE	29:1
FILM DISPENSING SYSTEM ILLUSTRATED (500S MODEL)	30
PARTS LIST FOR ABOVE	30:1
FAULT FINDING SUMMARY	31/32
CUT AND START UNIT ILLUSTRATED	33
PARTS LIST FOR ABOVE	33:1
CUT AND START UNIT ILLUSTRATED	34
PARTS LIST FOR ABOVE	34:1
CUT AND START MOUNTING FRAME ILLUSTRATED	35
PARTS LIST FOR ABOVE	35:1
SLIP RING ASSY ILLUSTRATED	36
PARTS LIST FOR ABOVE	36:1
SENSOR MAGNET MOUNTING BRACKETS ILLUSTRATED	37
PARTS LIST FOR ABOVE	37:1
CUT AND START ELECTRICAL CIRCUIT	38
CUT AND START FAULT FINDING SUMMARY	39/40
	& 41

GENERAL SAFETY INSTRUCTIONS.

Before operating, adjusting or servicing the machine it is important that these instructions are carefully read by those directly concerned.

Whilst every care has been taken in the design of this machine there remains a certain amount of risk to Personnel whilst the machine is in use. It is strongly recommended that the user/operator takes all possible precautions to ensure both his own safety and that of others while the Autowrap is operating. The area around the machine should be kept clear at all times and only the operator should be allowed near the machine when working.

The Autowrap is designed and sold for agricultural purposes and as such complies with the definition as laid down for an Agricultural Trailed Appliance.

Under this definition the machine is not fitted with brakes or lights. IT SHOULD NOT UNDER ANY CIRCUMSTANCES BE TOWED ON THE HIGHWAY AT SPEEDS IN EXCESS OF 20 m.p.h. (30 km/h).

If the machine is to be towed on the highway out of daylight hours then a suitable lighting board with indicators, stop lights and rear lights should be fixed to the rear of the machine before proceeding.

Bales should be loaded carefully on to the turntable and not dropped from a height.

Owners and operators are advised to contact their dealer regarding any field or service problems.

SPECIAL SAFETY INSTRUCTIONS

1. Stop engine of tractor before working on machine.
2. Put a suitable prop under raised platform before working in this area.
3. Always raise Lift Arm and fit safety prop before transporting machine on public roads.
4. Lift Arms should always be lowered before operating turntable.
5. Ensure platform rollers are parallel to Lift Arm before arm is raised.

OPERATING SAFETY INSTRUCTIONS

1. Operators should have their hands on the controls at all times when the machine is use.
2. Autowrap control unit and lever controls must remain in the tractor cab at all times. The operator must at no time leave the tractor cab when the machine is in motion.
3. Keep onlookers clear of machine at all times. Danger zone is 5 metres.
4. Beware of rotating turntable and all moving parts.
5. If not operated correctly the bale could fly off the turntable. The end support rollers must always be fitted. Do not exceed recommended turntable speed of 25 r.p.m. Mis-shapen bales combined with excessive turntable speeds can be dangerous.
6. Care must be taken when tipping bales from machine on sloping ground and during subsequent handling to ensure that they do not roll, thus causing hazard.

THINK OF YOUR PERSONAL SAFETY AND THAT OF OTHERS AT ALL TIMES.

TECHNICAL SPECIFICATIONS

			400S & 500S Model (Trailed)
Dimensions			
Total length - Excluding Bale Ramp	350cm
Width - excluding lift arm	221cm
" - lift arm fully raised	243cm
" - lift arm lowered	380cm
Height to top of side (bale guide) rollers			110cm
Height to tp of lift arm	242cm
Weight			
With lift arm	1080kgs
Without lift arm	960kgs
Wheels			
Size	10-80. 12
Pressure	42 p.s.i.
Lift arm capacity - Axle extended normally	750kgs
" " " - Axle extended fully	900kgs
Speed of turntable	25 rev/min*
Oil requirement	(165 kpcm ²)
Attachment to tractor	Tractor Hitch
Bale Sizes	120 x 120cm up to
120			x 153 cm M a x
1000kgs			
Film (Width of Roll)	500mm on 400S Model & 750MM on 500S Model

*The speed of rotation can be varied to suit various conditions but on no account should it exceed 25 r.p.m. (Speed in excess of 25 r.p.m. will avoid warranty).

PRE DELIVERY INSTRUCTIONS

IMPORTANT: DO NOT ATTEMPT TO OPERATE UNTIL THE FOLLOWING INSTRUCTIONS ARE PERFORMED OTHERWISE SERIOUS DAMAGE COULD BE CAUSED.

1. MACHINE ASSEMBLY

For ease of transportation some items are removed from their positions and stored elsewhere on the machine. The control box, film dispenser and cut and start unit are stored under the bale belt. Also stored under belt on remote control machines are the infra red receiver and sender units and warning beacon. The film mast is attached to the front of the machine. On round bale machines only, the top rollers c/w mounting brackets and the plastic end rollers are mounted on temporary brackets beside the bale belt, also the main guard may be dropped from its mounting position on the machine chassis. Road wheels, bale lift arm and bale ramp are transported separately. Remove the above items and assemble as detailed in parts list section of this manual taking particular note of the following points.

(i) DISPENSER MAST

Insert lift mast into socket towards front of machine. Ensure film pull down ram is faced towards the machine. Attach the pull down arm hydraulic ram. Attach the film dispenser to the mast ensuring that the end marked top is faced up. On remote control machines attach the infra-red receiver and warning beacon to top of mast. The film mast height is adjustable. Its height is dependant on bale size and type and is set in the field. It should be set so that centre line of film is in line with centre of bale. See Fig. 1

(ii) CUT & START

Attach Cut & Start unit to mounting frame on the left hand side of the machine. It is possible to move the unit along the mounting and fix it to any of three holes. On all round bale wrapping machines the unit is fixed to the centre hole on the mounting frame. Connect electrical supply to unit ensuring that wiring is secure. The cable is stored on the turntable frame near the Cut & Start mounting.

(iii) BALE LIFT ARM

Assemble bale lift arm and attach to mounting points on right hand side of main chassis. Attach hydraulic ram to lift arm; grease pivot pins.

(iv) TOP ROLLERS AND PLASTIC END ROLLERS

Place plastic end rollers in sockets on the back and front of the turntable. On round bale machines only, attach top rollers and mounting brackets to each side of the machine.

(v) MAIN GUARD (round bale machines only)

Bolt main guard onto its four mounting points.

(vi) ROAD WHEELS (trailed machines only)

Attach road wheels ensuring that nuts are tight and tyre pressure is 50 p.s.i.

(vii) BALE RAMP OR MAT

Attach bale ramp or mat to rear of chassis. Note Round bale trailed machines have bale ramps all other machines have bale mats.

CHECKS TO BE PERFORMED

1. Check that all bolts and nuts are tight.
2. That all lubrication points are greased.
3. Check that all guards are in place.
4. Check all operating and safety stickers are in place.

2. OPERATIONAL TEST

When all above assembly and checks have been carried out the operation of the machine should be checked as follows:

NOTE: IF YOU ARE NOT TOTALLY FAMILIAR WITH THE OPERATION OF THE TANCO CONTROL SYSTEM READ THIS MANUAL IN FULL BEFORE PROCEEDING WITH OPERATIONAL TEST.

1. Attach machine to tractor.
2. Connect hydraulic hoses to D/A service on tractor.
3. Fit controller box inside cab.
4. Connect control box to machine and connect power cable direct to tractor battery. It is important that the leads are connected with the correct polarity.
5. Fit cable control actuator socket to convenient position in cab and locate actuators in socket.
6. Lock hydraulic lever in tractor so that oil is flowing through system.
7. Check function by operating control levers.
 - (a) Lift arm up and lift arm down. NOTE ensure lift arm is down before moving to (b).
 - (b) Turntable rotation forward and reverse.
 - (c) Tip up and down checking hoses are o.k.
8. Switch controller on.
9. Switch controller to manual operating mode by operating toggle switch.
10. Check Cut & Start plunger out and in.
11. Switch machine to AUTO mode then run through the Wrapping cycle. See operating instruction section of this manual on how the machine should perform, and if any function fails to operate correctly consult fault finding section of the operators manual.

3. CUSTOMER CHECKS

Before despatching consult customer on the following points:

1. That the machine model suits his requirements.
2. If machine is to be operated on a tractor with a closed centre hydraulic system then a closed centre valve is required, see separate instructions.
3. That the tow hitch type is compatible with the tractor. Three different hitch types are available.

TRANSPORT INSTRUCTIONS

1. Never use straps around the machine when lifting. Use only the following lifting points:- Tow hitch and two sockets on each side of main frame at rear for trailed models. 3pt. Linkage frame and two sockets on each side of main frame at rear for 3 pt. Linkage Model.
2. When the machine is towed on the road the Lifting Arm (if fitted) must be in the fully raised position, the safety prop fitted and the axle returned to narrowest position.
3. Raise the Parking Jack on trailed models before moving machine.

MACHINE IDENTIFICATION

The Serial Number plate is located on main frame forward of offside wheel on trailed models and on 3pt. Linkage frame for 3pt. Linkage model.

Always refer to this number when ordering parts. The Spare parts catalogue number and description should be used. The reference numbers are used to help identifying the spare part.

For your records write serial number here.

SERIAL NO. _____

PREPARATION OF A NEW MACHINE

1. Check height of film mast to ensure that centre line of film spool is level with the centre line of the bale on the turntable. This will alter with different bale diameters. If this alignment is not correct more film than necessary will be used. See Fig 1. Page 15.
2. When connected to John Deere* tractor the valve must be converted to closed centre. See Page 18.

HYDRAULIC CONNECTIONS

Connect the feed and return hoses from the Autowrap valve to the tractor's double-acting facility.

NOTE: The return hose is fitted with a non-return valve to protect the Autowrap from damage in the event of incorrect connection to tractor hydraulics.

NOTE* To ensure maximum efficiency and length of life of hydraulic components this machine requires a clean supply of hydraulic oil. IT IS RECOMMENDED THAT THE TRACTOR HYDRAULIC FILTER ELEMENT BE REPLACED AND THEREAFTER MAINTAINED IN ACCORDANCE WITH THE MANUFACTURERS RECOMMENDATIONS.

Bale Wrap Controller:

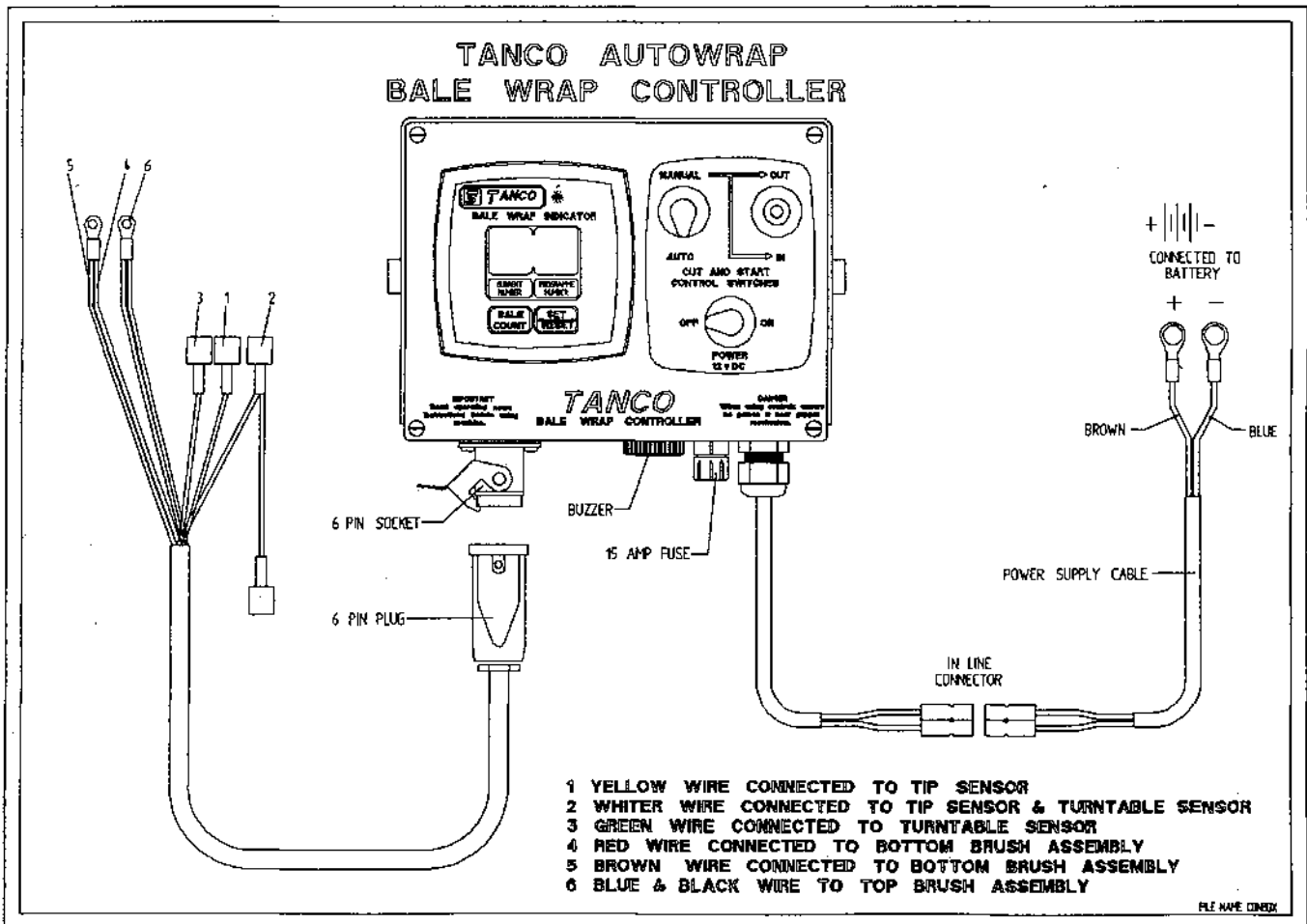
Connect direct to battery as per operating instructions and switch on. The programming of the Automatic Bale Wrap Controller is easily done by following the steps outlined below:

Once the unit is switched on, the number of required turntable revolutions appears on the right hand display. To change this press and hold the "hold to set" button, see fig. 1, then press the "set/reset" button. The first digit of the number will then blink and count from 0-9. Release the "set/reset" button at the required number. By pressing the "set/reset" again the second digit can be changed.

The monitor counts the number of bales per batch and the cumulative total. To see these, press the "bale count" button. The first number to appear is the batch total. If the button is held down for 10 seconds, a line will appear on the display, followed by the cumulative number wrapped. The batch count can be reset to 0 by holding the "bale count" button down and pressing the "set/reset" once. The cumulative total cannot be returned to zero.

To enable you to understand how the controller works, here is a brief resume of its functions.

- (1) After two revolutions of the turntable the actuator pushed open the Cut and Start, this action takes 8.5 secs until the latch engages, then after 6 revolutions of the turntable the actuator closes for a period of 5.5 seconds and stops in the rest position. When the turntable is tipped, the magnet operates the sensor which activates the linear actuator which closes fully and in doing so, trips the latch releasing the gripper arm which slams closed under the spring pressure, cutting the film and, at the same time gripping the film for the next bale



BALE WRAP CONTROLLER FUNCTIONS

The Bale Wrap Controller has a total of seven functions to control.

To access these functions press/hold * button and switch on, then release * button.

A Chevron **V** appears at the left hand side of the display windows:- this may be moved across the display from left to right by repeatedly pressing * button.

The seven chevron positions have specific functions and the time for each function may be set by the two buttons at the bottom of the display screen.

- < > +

Reading from left to right the chevron positions are as follows:

- V** (1) Indicates number of turns to activate motor = 2
- V** (2) Indicates the number of seconds it powers out until the latch engages = 8.5
- V** (3) Indicates the number of revolutions of the turntable before the motor reverses = 6
- V** (4) Indicates the number of seconds required to reverse to the park positions = 5.5
- V** (5) Indicates the number of seconds from the tipping signal until the motor is fully closed = 2.5
- V** (6) Indicates the number of revolutions before the set figure at which the buzzer sounds = 0

- (7) No chevron appears but letter **N** appears. This indicates "Non-Auto Reset" and does not need to be changed. It means that you can go past the preset number of revolutions eg: if set for 22 and you decide to do a few more turns to ensure bale is fully wrapped, you can do so without upsetting the programme.

Note: The act of tipping off the bale completes the programme of functions so if you are demonstrating how the unit works, always finish up by passing a magnet over the trip sensor when you will notice the display return to the preset figure in the right display and to 0 in the left one.

Finally, to lock all functions into the controllers memory, switch power off and back on again.

OPERATING INSTRUCTIONS

1. Fit roll of film and thread through the Dispenser roller assembly by following the instruction label on the film mast.
2. Set the bale wrap indicator to the correct setting for the size of the bale being wrapped and the width of film being used. see Page 6 for list of some recommended setting.
3. Power down Lift Arm until wheel is clear of ground and adjust wheel outward to appropriate setting for bale weight. See para 5, page 4.
4. Adjust tractor engine speed to give turntable speed of 16 - 25 r.p.m. **NOTE:** Speeds in excess of 25 r.p.m. will void warranty.
5. Position turntable with cut and start unit facing front of machine.
6. Attach film tag end to gripper section of cut and start unit.
7. Rotate turntable anticlockwise through 90 degrees and stop turntable with cut and start unit opposite to lift arm.
8. Locate bale on Lift arm, then raise lift arm and gently roll bale onto turntable. Lower arm.
9. Start wrapping, turntable rotating clockwise. Film tension is automatically set so that width of film applied to the bale stays at approx width of 405 - 410mm for 500mm wide film roll and 615 - 620mm for 750mm wide film roll.
10. Continue wrapping until signal from bale wrap indicator sounds (required number of revolutions has been reached). Then stop with cut and start unit facing towards front of machine and film aligned with gripper section of cut and start unit.
11. Tip bale from machine. When the machine is almost fully tipped the cut and start unit grips and cuts the film and the bale is then unloaded down the bale ramp.
12. Lower the turntable and rotate anticlockwise through 90 degrees and stop with cut and start unit opposite to lift arm.
13. Repeat operations 7 - 12 as required.

NOTE:The film end need only be attached at the start of a roll, after that the sequence is automatic.

WARNING LIFT ARM

The Lift Arm on the trailed machine is designed to pick up and deposit bales onto the turntable prior to wrapping and to raise the machine while empty, to facilitate adjustment to sliding axle. It is not intended to be used or transporting bales over distances or for use as a stabiliser whilst wrapping.

Therefore any use of the lift arm outside its primary function will be deemed to be abuse and will void all warranty.

FILM OVERLAP SYSTEM.

The Autowrap is fitted as standard with the 2 x 2 x 50% film overlap system. This is achieved by means of a chain drive which ensures that the correct number of film layers are applied to the bale after a specific number of revolutions of the turntable. The number of revolutions required to wrap a bale depends on width of film being used and bale size - See table below. The chain to be positioned on outer sprockets for 500mm wide film, and on inner sprockets for 750mm wide film. See fig. A, Below.

For silage bales we recommend the application of a minimum of four layers of film.

Bale Size	Width of Film Roll	Bale Indicator Setting (Revs)
120cm x 120cm	500mm	22
120cm x 120cm	750mm	15
120cm x 137cm	500mm	24
120cm x 137cm	750mm	16
120cm x 150cm	500mm	26
120cm x 150cm	750mm	18

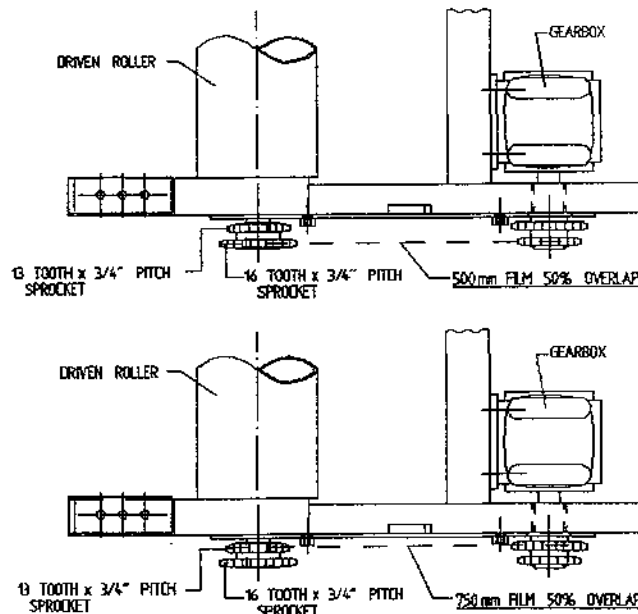


Fig. A

IMPORTANT

The above recommendations are only offered as a guide to correct wrapping of silage bales and the manufactures accept no responsibility for variations that may arise and the consequence of same. They are based upon turntable speeds of up to 25 r.p.m., and a minimum film width of 400mm applied to end of Bale when using 500mm wide film roll or a minimum film width of 600mm applied to end of bale when using 750mm wide film roll - See Page 14 proper maintenance of the machine and its correct operation.

It is the responsibility of the operator to ensure the correct number of wraps are applied, as variances can occur with fluctuations in speed of rotation, film quality and tensioning, shape and density of bale etc.

SERVICE AND MAINTENANCE

1. All nuts and bolts should be tightened after some hours in use and thereafter regularly.
2. Wheel pressure should be normally kept at 42 psi depending on bale weight and field conditions.
3. Inspect moving parts for wear on daily basis.
4. Remove hydraulic motor guard daily and clean loose materials from drive pulley and tensioner roller. Replace guard and lock in position while ensuring it does not collide with rotating turntable assembly.
5. Lubrication.

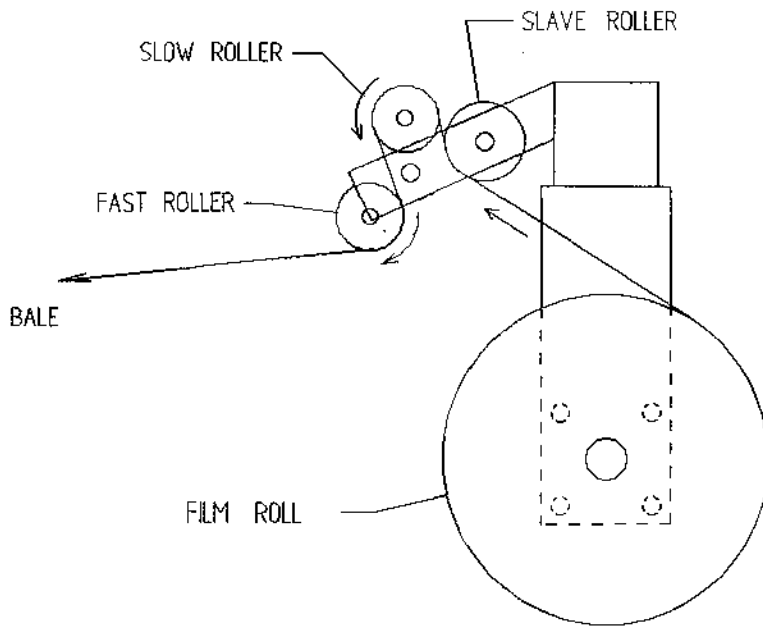
Drive chain & sprocket	-	grease every 24 hours.
End rollers	-	grease every 24 hours.
Main rollers	-	grease every 24 hours.
Hinge pins on Lift arm	-	grease every 24 hours.
Hinge pins on main tip frame	-	grease every 24 hours.
Hydraulic rams	-	grease every 24 hours.
Wheel bearings	-	grease every 24 hours.
Film reel assy.	-	grease every 24 hours.
Dispenser slave roller	-	oil every 24 hours.
Dispenser gearboxes	-	grease sparingly each month
Main spindle	-	grease every 4000 - 5000 bales.
Gearbox oil level	-	Check every 4000 - 5000 bales
6. Adjustments

Secondary drive chain tension.	:	Adjust after first days work then every 50 hours.
Primary drive chain tension	:	Adjust after first days work then check/adjust every 200 hours. See Fig 2.
Toothed drive belt	:	Adjust tension if slippage occurs See Fig 3.
Main conveyor belt	:	Adjust by moving idler roller up slope being careful to keep it parallel to the main drive roller.
7. Film Dispenser

Fit with plunger at top.
Apply one shot of Multi-Purpose Grease
Wash rollers often to avoid build up of Tack from film.
Follow Film threading diagram. See Fig 1.
8. Film Adjustment

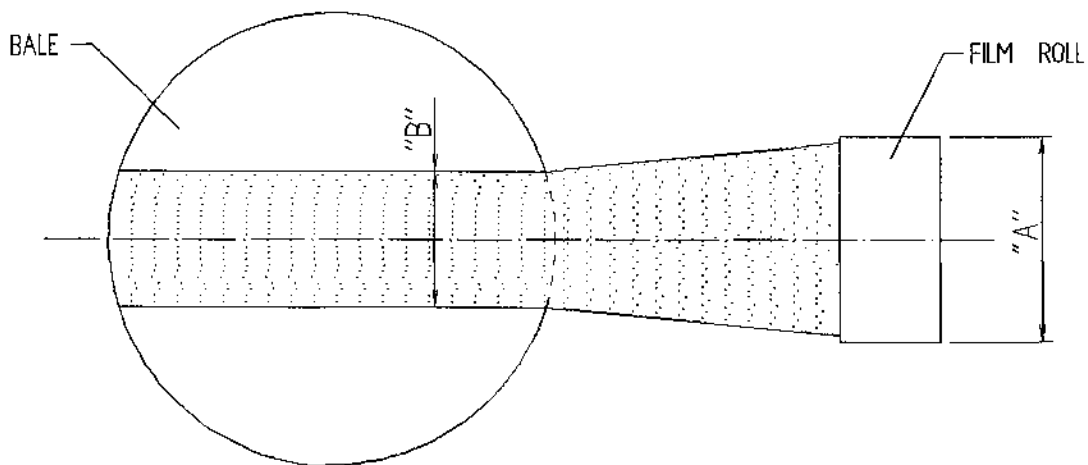
Centre of film roll must be in line with centre of bale and film mast should be vertical.

TANCO AUTOWRAP FILM THREADING DIAGRAM



FILM ADJUSTMENT

CENTRE OF FILM ROLL MUST BE IN LINE WITH CENTRE OF BALE AND FILM MAST SHOULD BE VERTICAL.



FILM ROLL WIDTH "A"	FILM WIDTH ON END OF BALE "B"
500 mm	400 mm
750 mm	600 mm

Fig. 1

FILE NAME W060-LA21

TANCO AUTOWRAP CONSTANT INDEXING PRIMARY CHAIN DRIVE TENSIONING SYSTEM

CHAIN TENSIONING PROCEDURE

1. LOOSEN M10 BOLT SECURING BELT TENSIONER.
2. TENSION BELT BY ADJUSTING TENSIONER USING SPANNER IN DIRECTION OF ARROW "X" UNTIL SETTING OF 15"-20" IS REACHED.
3. RE-TIGHTEN M10 BOLT TO SECURE TENSIONER IN POSITION.

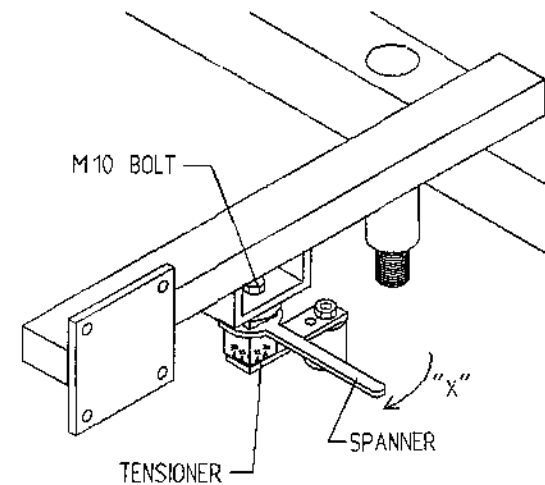
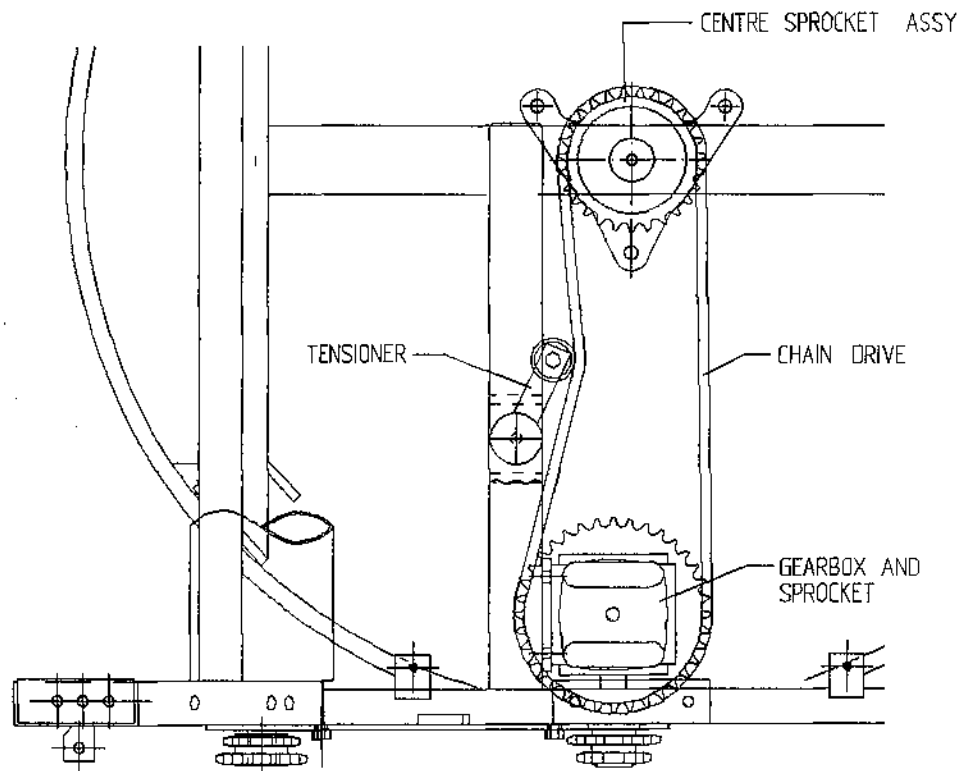


Fig. 2

TANCO AUTOWRAP 1994 DRIVE BELT TENSIONING SYSTEM

BELT TENSIONING PROCEDURE

1. CHECK THAT HYDRAULIC MOTOR MOUNTING BRACKET IS SECURE IN POSITION.
2. LOOSEN M10 BOLT WHICH CLAMPS BELT TENSIONER BODY TO MOTOR MOUNT.
3. TENSION BELT BY ADJUSTING TENSIONER USING SPANNER IN DIRECTION OF ARROW "X" UNTIL SETTING OF 30 IS REACHED.
4. RE-TIGHTEN M10 BOLT TO SECURE TENSIONER IN POSITION.

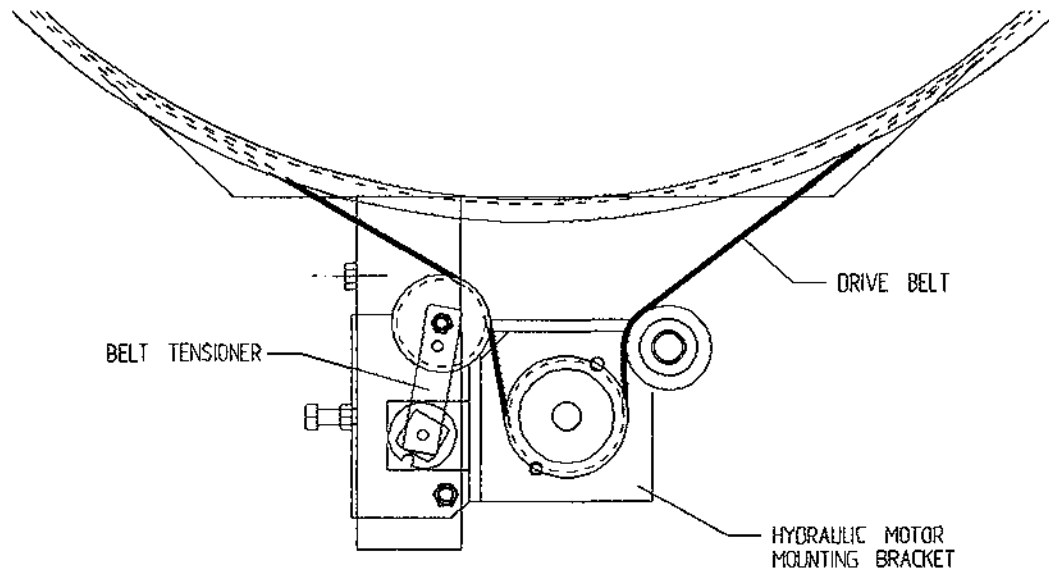
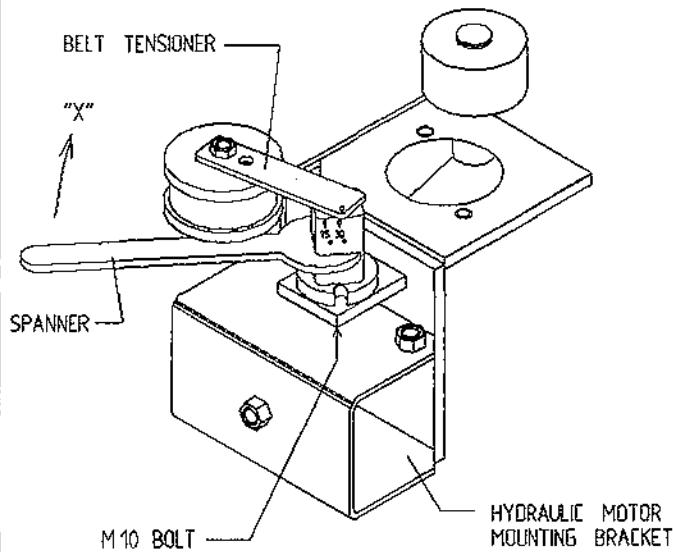


Fig. 3

FILM ADAPTOR

OPERATING INSTRUCTION

500mm wide film rolls are used as standard on 200, 300, & 400 autowrap Models while 750mm wide film rolls are used as standard on 500 model. If however, it is found necessary to use 500mm wide rolls along with 750mm film dispenser the following instructions must be adhered to: (NOTE: Failure to do so will result in inadequate wrapping and bale spoilage).

1. Fit film adaptor to top end of 500mm wide film roll as shown opposite (fig. 1.)
2. Remove drive chain from inner set of sprockets and fit to outer set of sprockets as shown in Fig. below.
3. Re-tension chain.
4. Adjust height of film mast so that centre of film roll is in line with centre of bale on the turntable.
5. Adjust bale wrap indicator setting from 15 to 22 revolutions for 120cm x 120cm blaes. (See page for guide to bale wrap indicator settings).

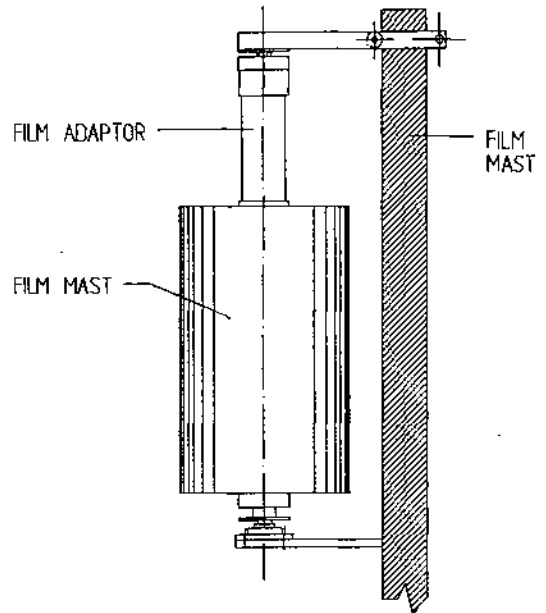
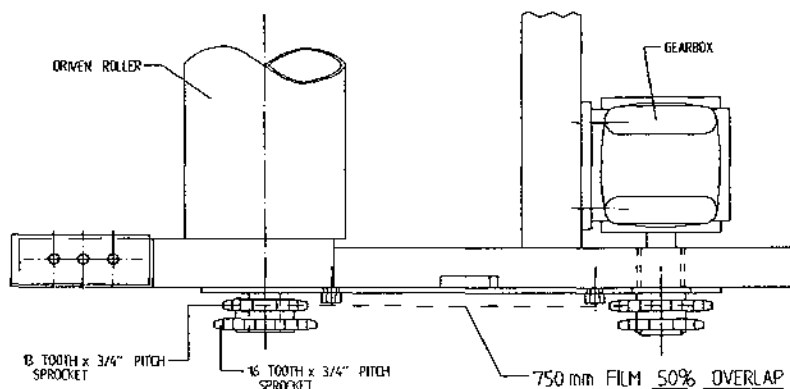
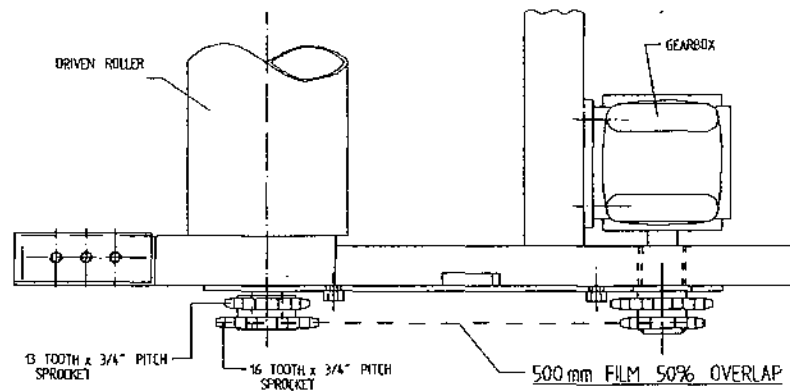


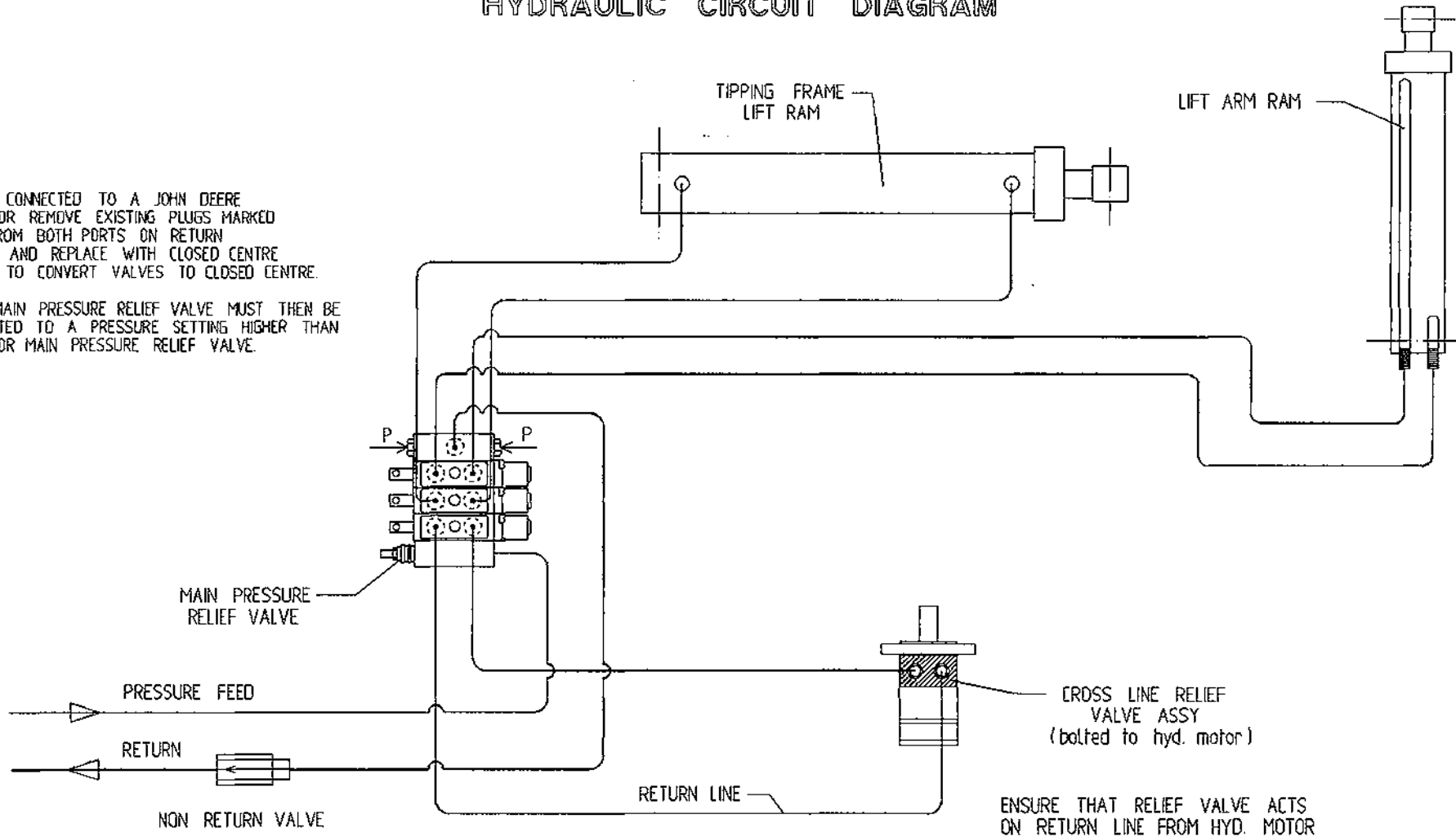
Fig. 1



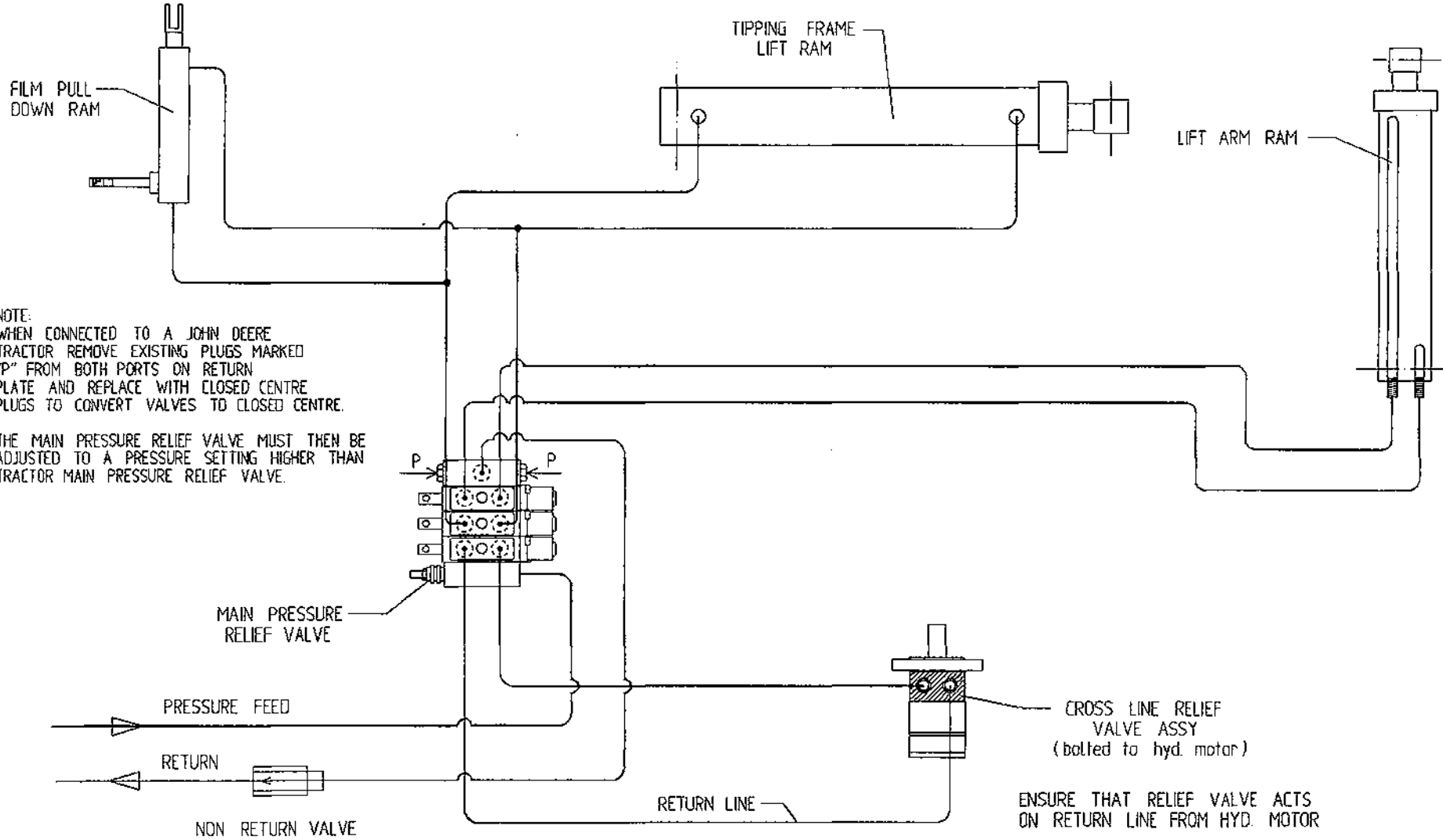
TANCO AUTOWRAP 400 S MODEL (TRAILED) 1994 HYDRAULIC CIRCUIT DIAGRAM

NOTE
 WHEN CONNECTED TO A JOHN DEERE
 TRACTOR REMOVE EXISTING PLUGS MARKED
 "P" FROM BOTH PORTS ON RETURN
 PLATE AND REPLACE WITH CLOSED CENTRE
 PLUGS TO CONVERT VALVES TO CLOSED CENTRE.

THE MAIN PRESSURE RELIEF VALVE MUST THEN BE
 ADJUSTED TO A PRESSURE SETTING HIGHER THAN
 TRACTOR MAIN PRESSURE RELIEF VALVE.



TANCO AUTOWRAP 500S MODEL (TRAILED) 1994 HYDRAULIC CIRCUIT DIAGRAM

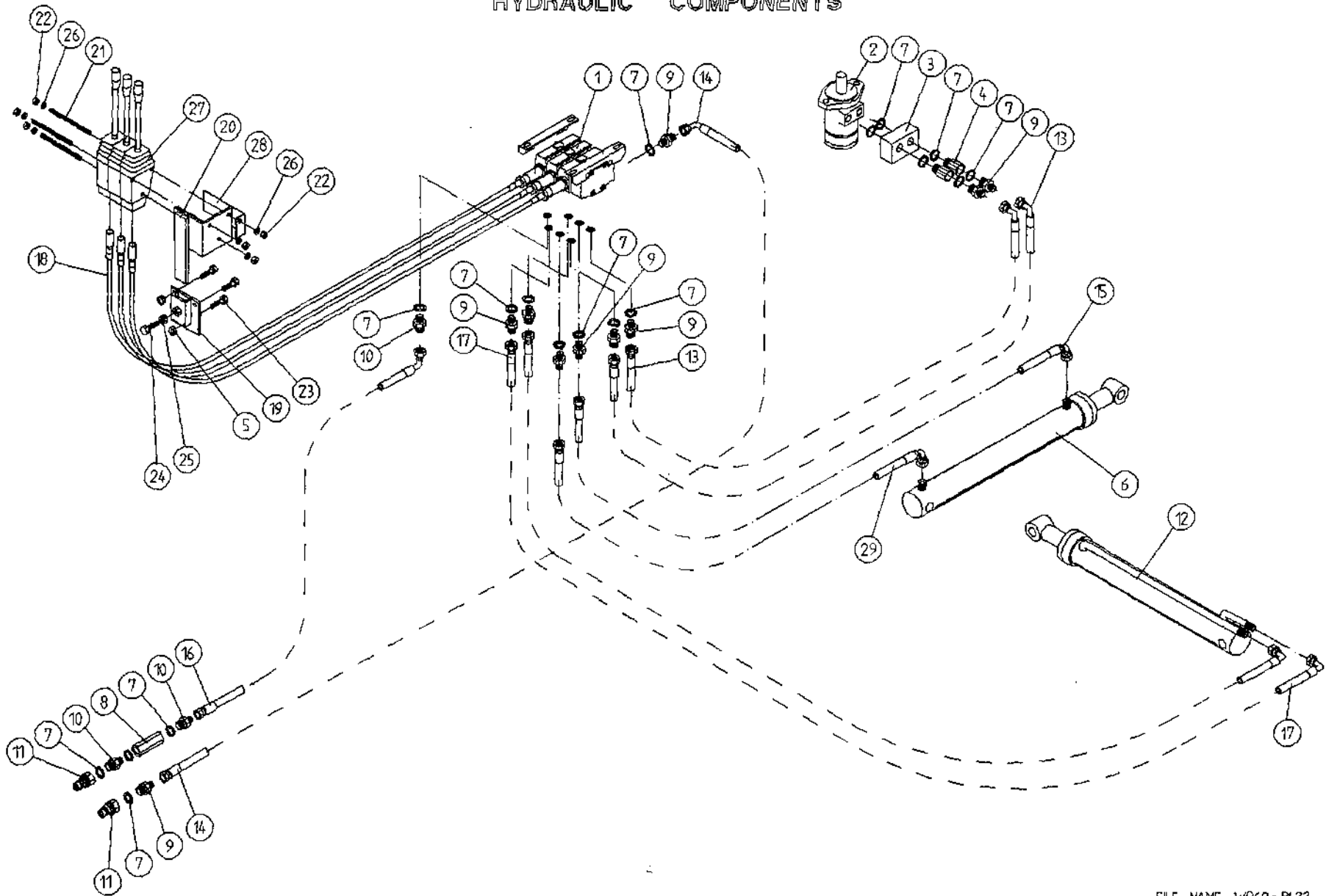


NOTE:
WHEN CONNECTED TO A JOHN DEERE
TRACTOR REMOVE EXISTING PLUGS MARKED
"P" FROM BOTH PORTS ON RETURN
PLATE AND REPLACE WITH CLOSED CENTRE
PLUGS TO CONVERT VALVES TO CLOSED CENTRE.

THE MAIN PRESSURE RELIEF VALVE MUST THEN BE
ADJUSTED TO A PRESSURE SETTING HIGHER THAN
TRACTOR MAIN PRESSURE RELIEF VALVE.

ENSURE THAT RELIEF VALVE ACTS
ON RETURN LINE FROM HYD. MOTOR

TANCO AUTOWRAP 400 S TRAILED MODEL 1994
HYDRAULIC COMPONENTS

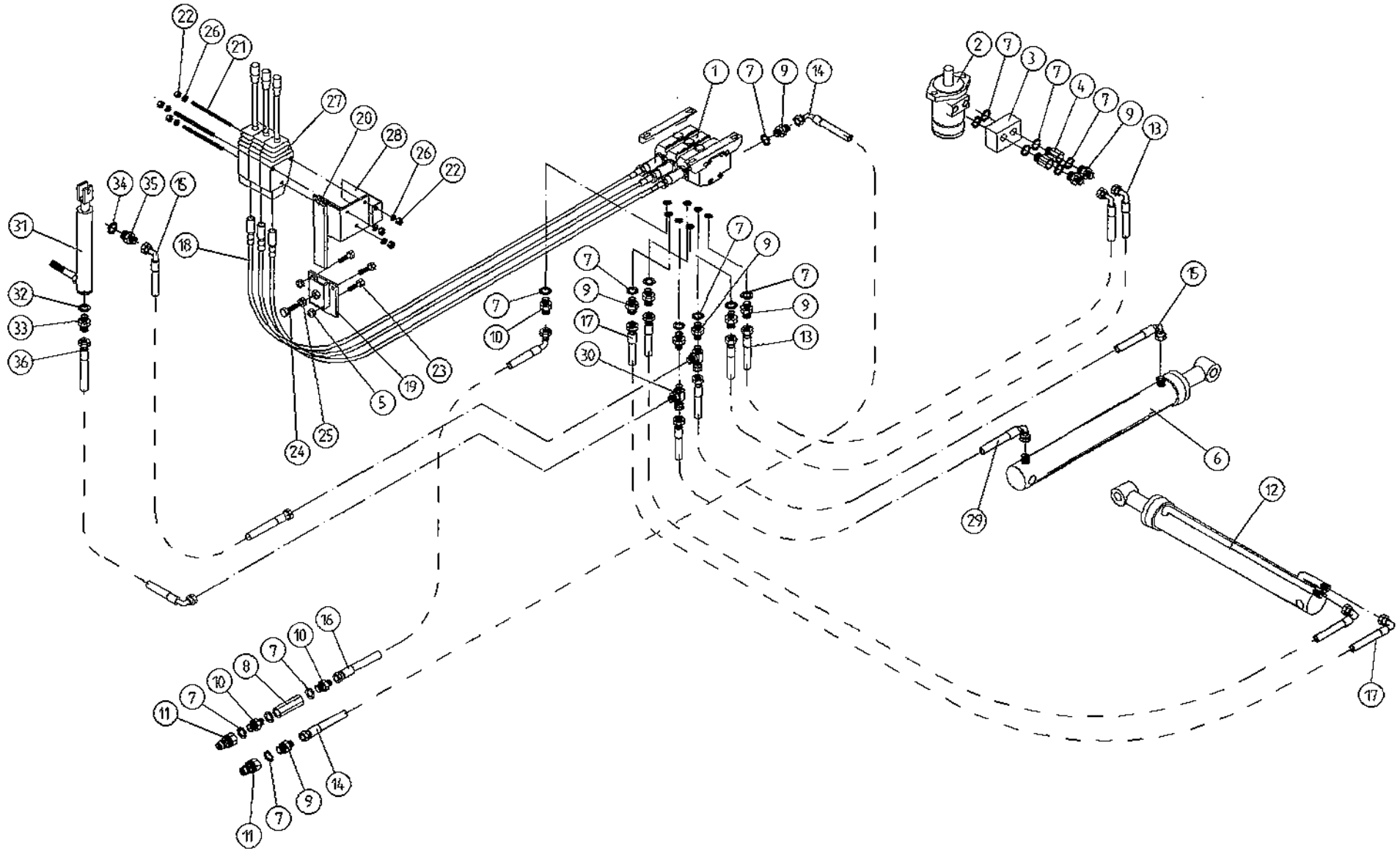


FILE NAME W060-PL22

**TANCO AUTOWRAP 400S MODEL (TRAILED) 1994
HYDRAULIC COMPONENTS (DIN)
PARTS LIST**

ITEM NO.	DESCRIPTION	QTY.	PART-NO.
1.	3 BANK SPOOL VALVE (DIN)	1	Z01-03-018D
2	HYDRAULIC MOTOR (C.L)	1	Z01-02-AR75
3	CROSS LINE RELIEF VALVE	1	Z01-03-002
4	1/2" BSP BOTTOM BANJO BOLT (SPECIAL)	2	Z01-03-002B
5	M10 LOCKNUT	3	Z23-10
6	HYD. RAM (FOR TIPPING FRAME)	1	Z01-01-AR687
7	1/2" DOWTY WASHER	18	Z01-04-03
8	1/2" NON RETURN VALVE	1	Z01-03-017
9	1/2" X 3/8" ADAPTOR	10	Z01-06-06-08
10	1/2" X 1/2" ADAPTOR	3	Z01-06-08-08
11	1/2" MALE END Q/R COUPLING	2	Z01-15-081
12	HYD. RAM (FOR LIFT ARM)	1	Z01-01-AW
13	96" ST/90 3/8" D/W HOSE	2	Z38-R2-96-S9
14	84" ST/90 3/8" D/W HOSE	1	Z38-R2-84-S9
15	72" ST/90 3/8" D/W HOSE	1	Z38-R2-72-S9
16	84" ST/90 1/2" S/W HOSE	1	Z12-R1-84-S9
17	108" ST/90 3/8" D/W HOSE	2	Z38-R2-108S9
18	3 1/2" METER ACTUATOR CABLES	3	Z004-03-0075
19	ACTUATOR MTG. BRACKET (LOWER)	1	WD65-AML
20	ACTUATOR MTG. BRACKET (UPPER)	1	WD65-AMU
21	TIE BOLT (M8 X 150MM LONG)	3	WSB150
22	M8 HEX NUT	6	Z18-08
23	M10 HEX HD. SETS X 40MM LONG	3	Z26-064S
24	M12 HEX HD. SET X 40MM LONG	1	Z26-084S
25	M12 HEX NUT	1	Z18-12
26	8MM DIA SPRING WASHER	6	Z12-02-08
27	ACTUATOR LEVER	3	Z004-03-009
28	STICKER MOUNTING PLATE	1	WD60-794
29	60" ST/90 3/8" HOSE	1	Z38-R2-60-S9

TANCO AUTOWRAP 500 S TRAILED MODEL 1994
HYDRAULIC COMPONENTS

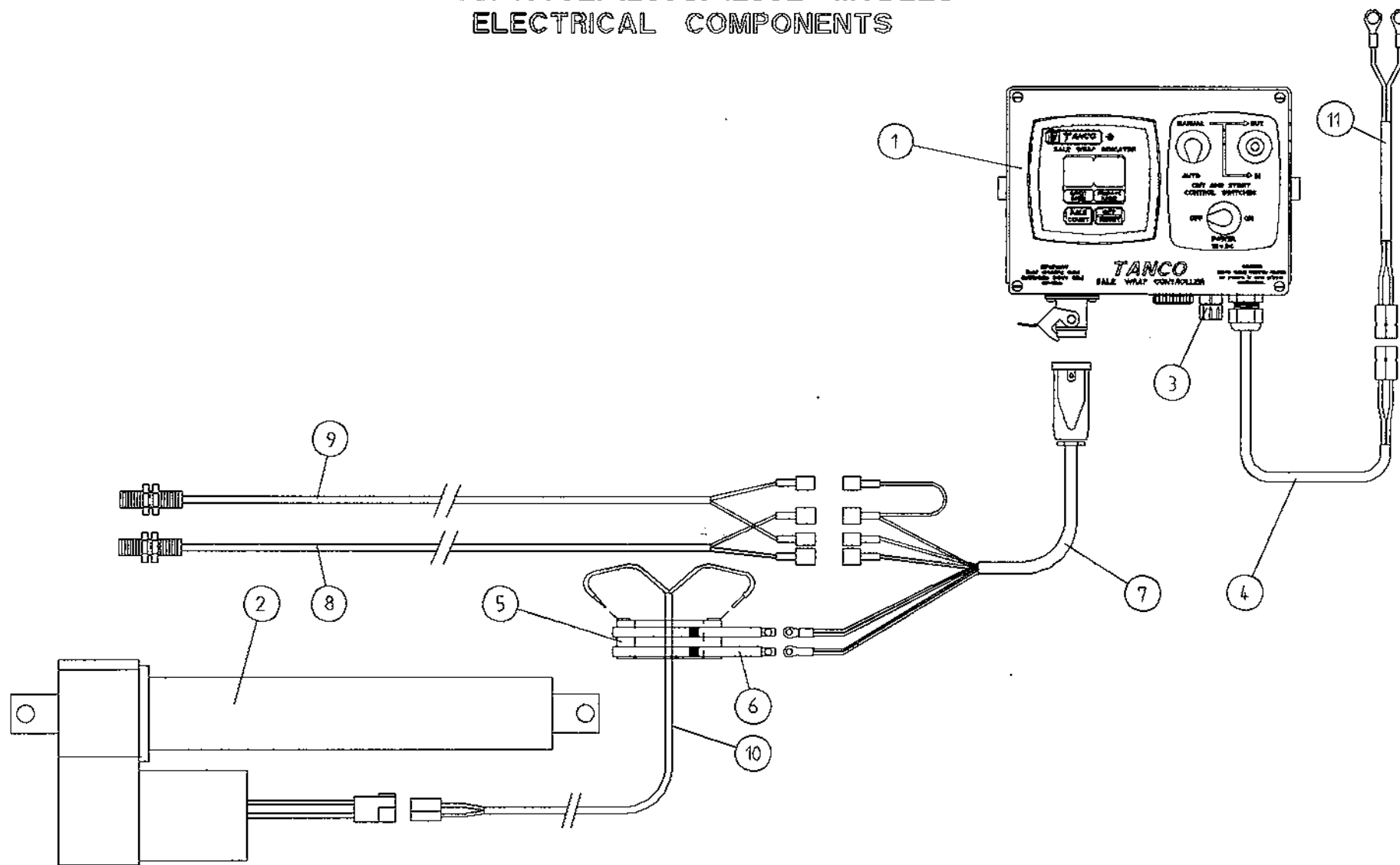


WD60-PL23

TANCO AUTOWRAP 500 S MODEL (TRAILED) 1994
HYDRUALIC COMPONENTS (DIN)
PARTS LIST

ITEM NO.	DESCRIPTION	QTY.	PART-NO
1	3 BANK SPOOL VALVE (DIN)	1	Z01-03-018D
2	HYDRAULIC MOTOR (C.L)	1	Z01-02-AR75
3	CROSS LINE RELIEF VALVE	1	Z01-03-002
4	1/2" BSP BOTTOM BANJO BOLT (SPECIAL)	2	Z01-03-002B
5	M10 LOCKNUT	3	Z23-10
6	HYD. RAM (FOR TIPPING FRAME)	1	Z01-01-AR687
7	1/2" DOWTY WASHER	18	Z01-04-03
8	1/2" NON RETURN VALVE	1	Z01-03-017
9	1/2" X 3/8" ADAPTOR	10	Z01-06-06-08
10	1/2" X 1/2" ADAPTOR	3	Z01-06-08-08
11	1/2" MALE END Q/R COUPLING	2	Z01-15-081
12	HYD. RAM (FOR LIFT ARM)	1	Z01-01-AW
13	96" ST/90 3/8" D/W HOSE	2	Z38-R2-96-S9
14	84" ST/90 3/8" D/W HOSE	1	Z38-R2-84-S9
15	72" ST/90 3/8" D/W HOSE	2	Z38-R2-72-S9
16	84" ST/90 1/2" S/W HOSE	1	Z12-R1-84-S9
17	108" ST/90 3/8" D/W HOSE	2	Z38-R2-108S9
18	3 1/2" METER ACTUATOR CABLES	3	Z004-03-0075
19	ACTUATOR MTG. BRACKET (LOWER)	1	WD65-AML
20	ACTUATOR MTG. BRACKET (UPPER)	1	WD65-AMU
21	TIE BOLT (M8 X 150MM LONG)	3	WSB150
22	M8 HEX NUT	6	Z18-08
23	M10 HEX HD. SETS X 40MM LONG	3	Z26-064S
24	M12 HEX HD. SET X 40MM LONG	1	Z26-084S
25	M12 HEX NUT	1	Z18-12
26	8MM DIA SPRING WASHER	6	Z12-02-08
27	ACTUATOR LEVERS	3	Z004-03-009
28	STICKER MOUNTING PLATE	1	WD60-794
29	60" ST/90 3/8" D/W HOSE	1	Z38-R2-60-S9
30	3/8" FEMALE X 1/2" MALE/MALE "T" PIECE	2	Z01-12-002
31	HYDRAULIC RAM D/A	1	Z01-01-AW25
32	3/8" DOWTY WASHER	1	Z01-04-02
33	3/8" X 3/8" ADAPTOR FITTED WITH 0.06" RESTRICTOR	1	Z01-03-40
34	1/4" DOWTY WASHER	1	Z01-04-01
35	1/4" X 3/8" ADAPTOR	1	Z01-06-04-06
36	48" ST/90 3/8" D/W HOSE	1	Z38-R2-48-S9

TANCO AUTOWRAP 200SL/400S/500S
1050S/1050L/1250S/1250L MODELS
ELECTRICAL COMPONENTS



9227J

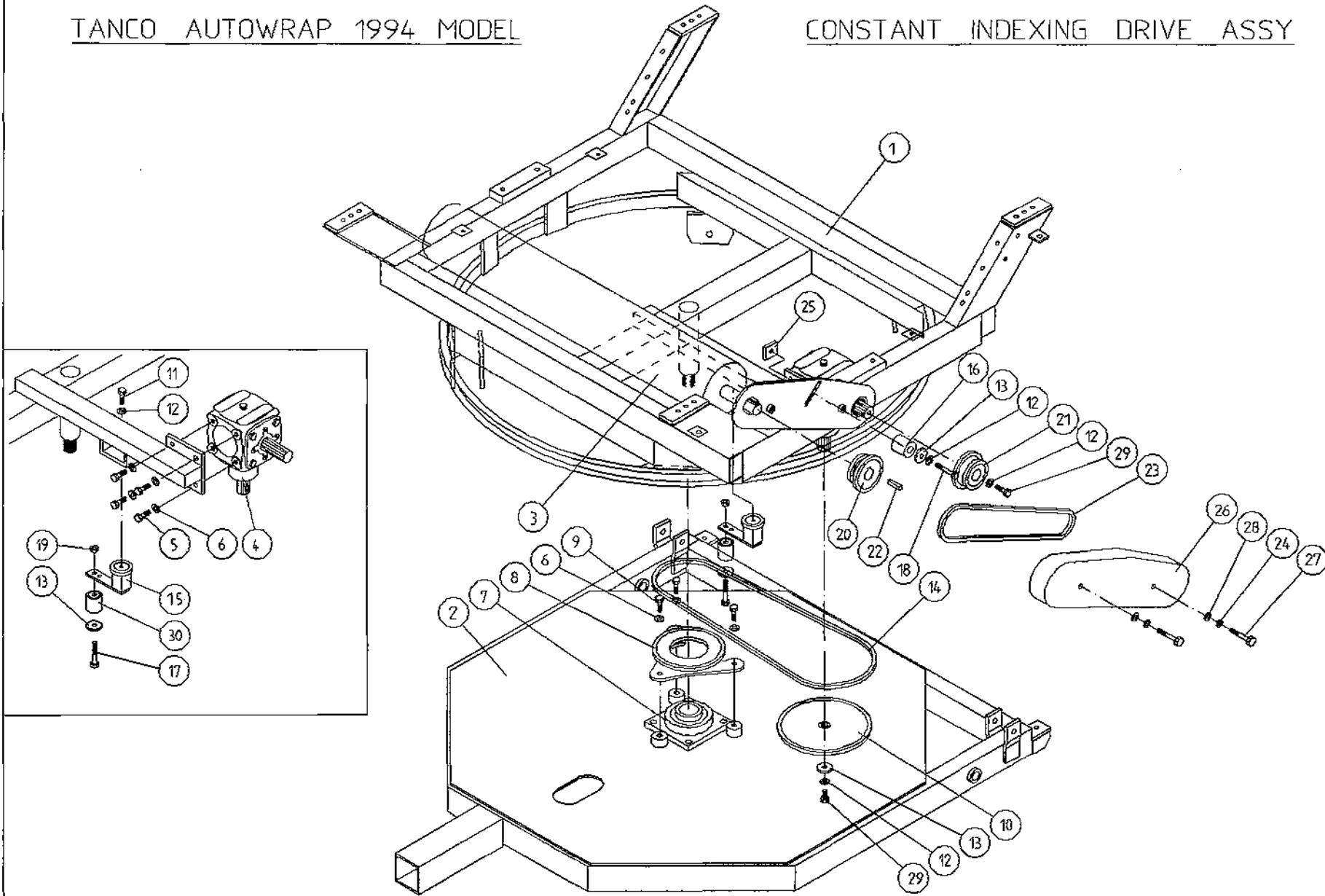
TANCO AUTOWRAP 200SL/400S/500S/1050S/1050L/1250S/1250L

ELECTRICAL COMPONENTS
PARTS LIST

ITEM NO.	DESCRIPTION	QTY	PART-NO
1.	CONTROL BOX	1	D6049
2.	WARNER LINEAR ACTUATOR	1	ZD605-510
3.	1 1/4" FUSE HOLDER	1	ZD606-100
4.	MAIN FLY LEAD FOR CONTROLLER	1	ZD606-060
5.	SLIP RING ASSY.	1	ZD605-308
6.	BRUSHES	2	ZD605-302
7.	7 CORE CABLE C/W HEARTING PLUG	1	D605-7C
8.	ROTATING SENSOR	1	ZD606-RS
9.	TIP SENSOR	1	ZD606-TS
10.	TWO CORE CABLE FOR SLIP RING	1	D605-02C
11	MAIN BATTERY LEAD FOR CONTROLLER	1	ZD606-030

TANCO AUTOWRAP 1994 MODEL

CONSTANT INDEXING DRIVE ASSY



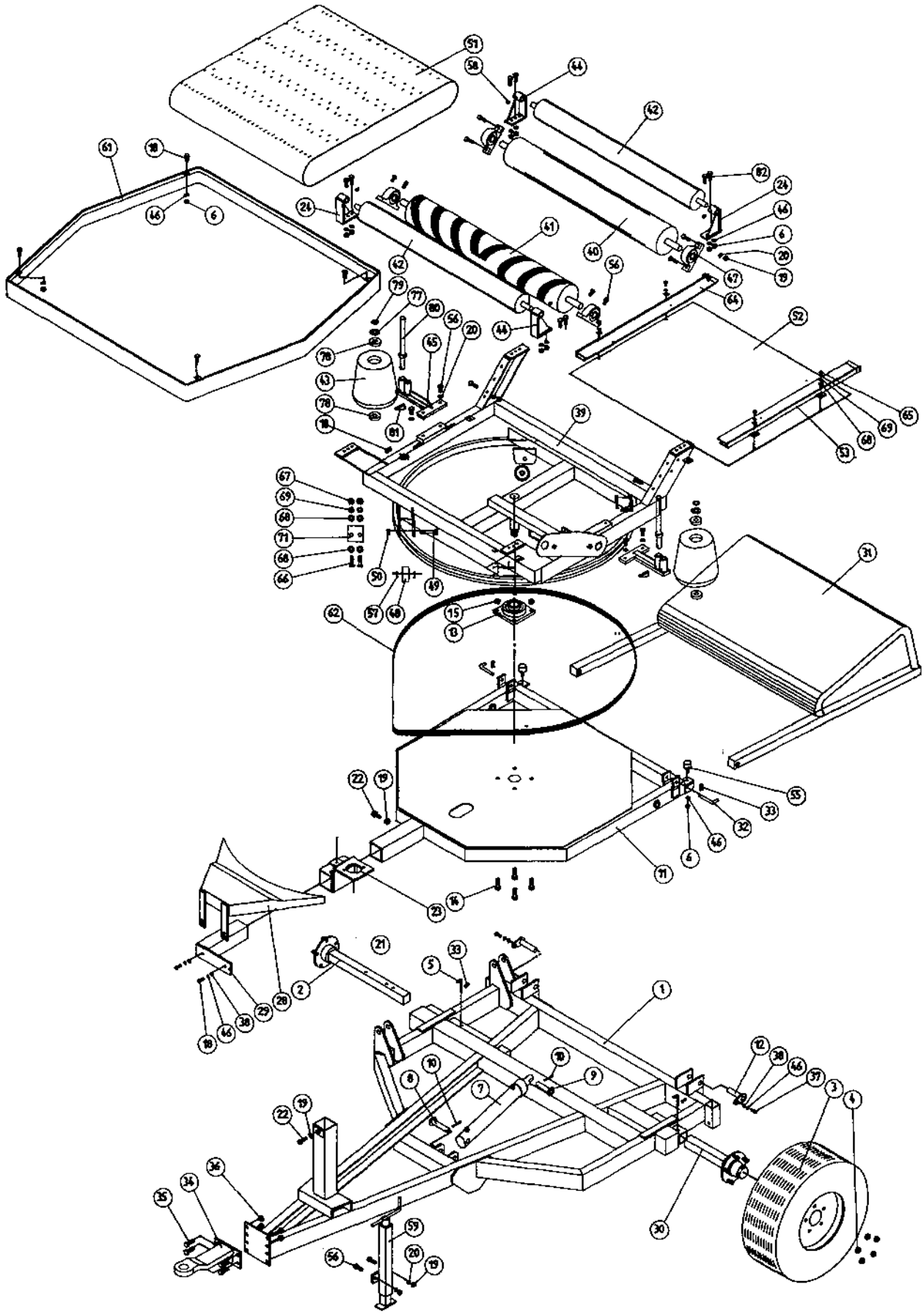
WD658-PL4

TANCO AUTOWRAP
CONSTANT INDEXING DRIVE ASSEMBLY

PARTS LIST

ITEM NO.	DESCRIPTION	QTY.	PART-NO
1	TURNTABLE ASSY.	1	WD60-TAC
2	TIPPING FRAME ASSY.	1	WD60-TFC
3	DRIVE ROLLER ASSY.	1	WD65-BRD
4	GEAR BOX	1	Z01-25-300
5	M12 HEX HD SET x 30mm LONG	4	Z26-082S
6	12mm DIA SPRING WASHER	7	Z12-02-12
7	2" DIA FLANGE BEARING	1	Z06-49EC
8	CENTRE SPROCKET ASSY 27 TOOTH	1	WD60-CSA
9	M12 HEX HD SET x 25mm LONG	3	Z26-081S
10	46 TOOTH SPROCKET	1	Z06-D65-46S
11	M10 HEX HD SET x 25mm LONG	1	Z26-0611S
12	10mm DIA SPRING WASHER	4	Z12-02-10
13	RETAINING COLLAR	3	WD623-071
14	CHAIN 3/4" PITCH X 92 PITCHES	1	Z09-AW-5
15	ROSTA TENSIONING UNIT ARM	1	Z06-454
16	CHAIN TENSIONER	1	WD65-CT
17	M10 HEX HD BOLT x 65MM LONG	1	Z26-0671B
18	M10 HEX HD BOLT x 80MM LONG	1	Z26-0691B
19	M10 LOCKNUT	1	Z23-10
20	SPROCKET DOUBLE SIMPLEX 13T/16T KEYED	1	Z06-D65-1316K
21	SPROCKET DOUBLE SIMPLEX 13T/16T SPLINED	1	Z06-D65-1316S
22	KEY 5/16" x 5/16" x 32mm LONG	1	WD623-K32
23	CHAIN 3/4" PITCH X 62 PITCHES	1	Z09-AW-3
24	1/2" DIA STAR WASHER	1	Z10-01-121
25	LOCKING FLAT	1	WD623-060
26	CHAIN GUARD	1	WD60-CGC
27	M10 HEX HD SET x 70mm LONG	2	Z26-068B
28	10mm DIA FLAT WASHER	2	Z10-02-10
29	M10 HEX HD SET x 30mm LONG	2	Z26-062S
30.	CHAIN TENSIONER	1	WD60-CT

TANCO AUTOWRAP 400 S8/ 500 S8 MODEL 1994

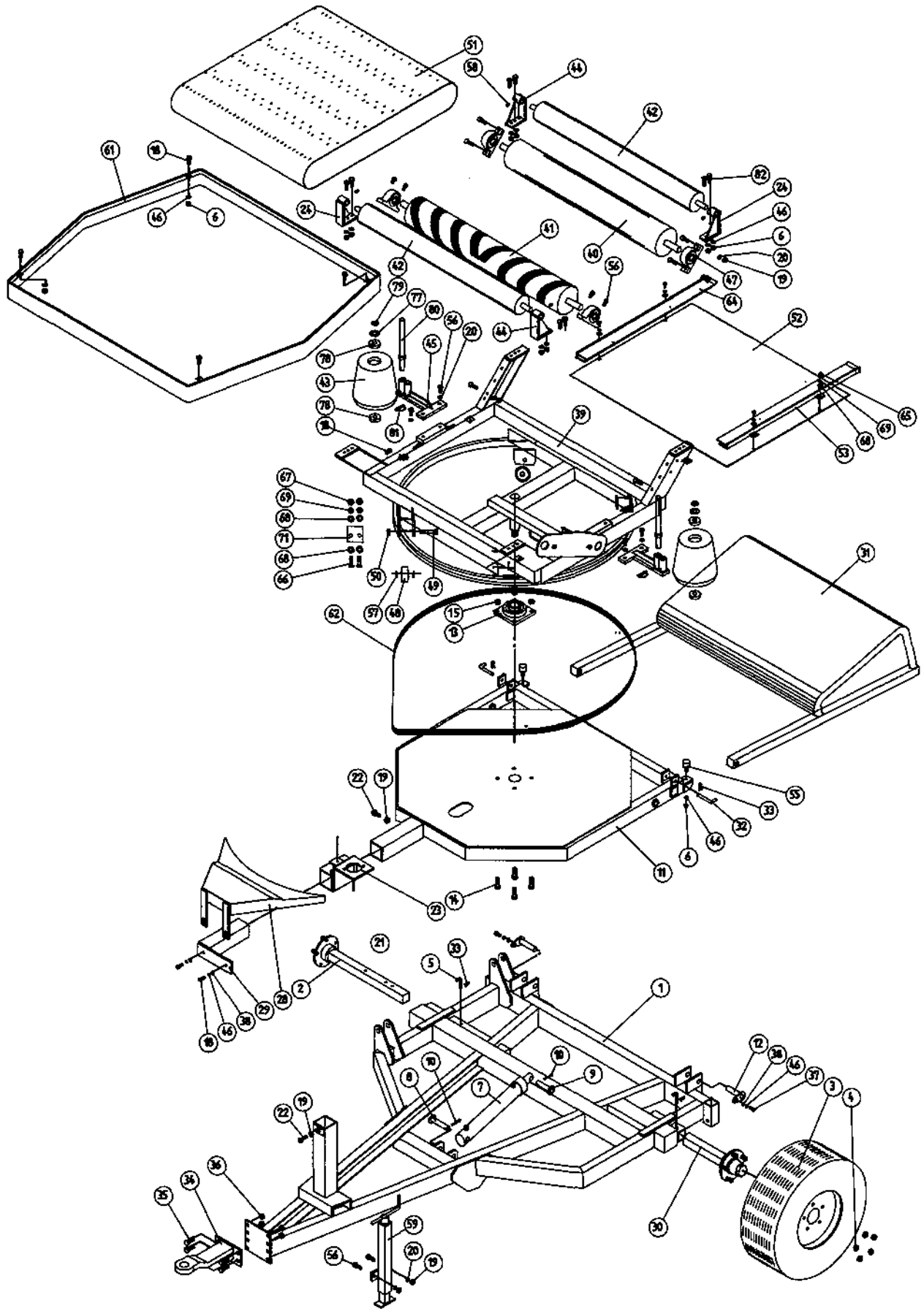


FILE NAME WD 658 PL 2

WD658-PL2
TANCO AUTOWRAP 400S8/ 500S8 MODEL (TRAILED) 1994
PARTS LIST

ITEM NO	DESCRIPTION	QTY	PART-NO
1	CHASIS ASSY	1	WD60-CHA
2	STUB AXLE (LONG)	1	Z04-033
3	WHEELS	2	Z04-03
4	WHEELS NUTS	10	M22AWNA
5	BISSEL PIN	2	Z03-22-AW82
6	M10 HEX NUT	18	Z18-10
7	HYD. RAM	1	Z01-01-AR687
8	RAM BOTTOM PIVOT PIN	1	Z03-02-330
9	RAM TOP PIVOT PIN	1	Z03-03-50
10	2" X 1/4" SPLIT PIN	2	Z03-21-29
11	TIPPING FRAME ASSY	1	WD60-TFC
12	TIPPING FRAME PIVOT PIN C/W GREASE NIPPLE	2	Z03-01-905
13	2" DIA FLANGE BEARING C/W CAM LOCK COLLAR	1	Z06-49EC
14	5/8" UNF HEX HD SET X 2" LONG	4	Z31B-064
15	5/8" UNF LOCKNUTS	4	Z20-10
18	M10 HEX HD SET X 30MM LONG	10	Z26-062S
19	M12 HEX NUT	14	Z16-12
20	12MM DIA SPRING WASHER	12	Z12-02-12
22	M12 HEX HD SETS X 30MM LONG	1	Z26-082S
23	HYD. MOTOR MOUNTING ASSY	1	WD60-HMB
24	ROLLER MOUNTING BRACKET	1	WD60-TRMBL
28	HYD. MOTOR GUARD ASSY	1	WD60-HMG
29	HYDRAULIC MOTOR GUARD MOUNTING BRACKET	1	WD60-HAMB
30	STUB AXLE (SHORT)	1	Z04-032
31	BALE RAMP ASSY	1	WD60-BR
32	BISSEL PIN	2	Z03-22-AW100
33	4MM "R" CLIP	4	Z36-02
34	HITCH ASSY	1	WD60-HIT
35	M16 HEX HD SET X 45MM LONG	4	Z26-123S
36	M16 LOCKNUTS	4	Z23-16
37	M10 HEX HD SET X 25MM LONG	2	Z26-061S
38	10MM DIA MACHINED FLAT WASHER	4	Z11-02-10
39	TURN TABLE ASSY	1	WD60-TAC
40	BIG ROLLER ASSY IDLER	1	WD610-BRI
41	BIG ROLLER ASSY DRIVER	1	WD658-BRD
42	SMALL ROLLER ASSY	2	WD60-SMR
43	SIDE ROLLER	2	Z06-AWR
44	ROLLER MTG BRACKET	2	WD60-TRMBR
45	END ROLLER MOUNTING BRACKET	2	WD658-ERM
46	10MM SPRING WASHERS	18	Z12-02-10
47	1 1/4" PILLOW BLOCK BEARING C/W CM LOCK COLLAR	4	Z06-485
48	SUPPORT WHEELS (4" DIA)	4	Z06-466
49	AXLE ASSY C/W GREASE NIPPLE	4	Z03-22-AW/AX Z39-60
50	M20 LOCKNUTS	4	Z23-20
51	1130MM WIDE X 2450MM LONG X 1/4" FLAT BELT	1	Z05-02AWS

TANCO AUTOWRAP 400 S8/ 500 S8 MODEL 1994



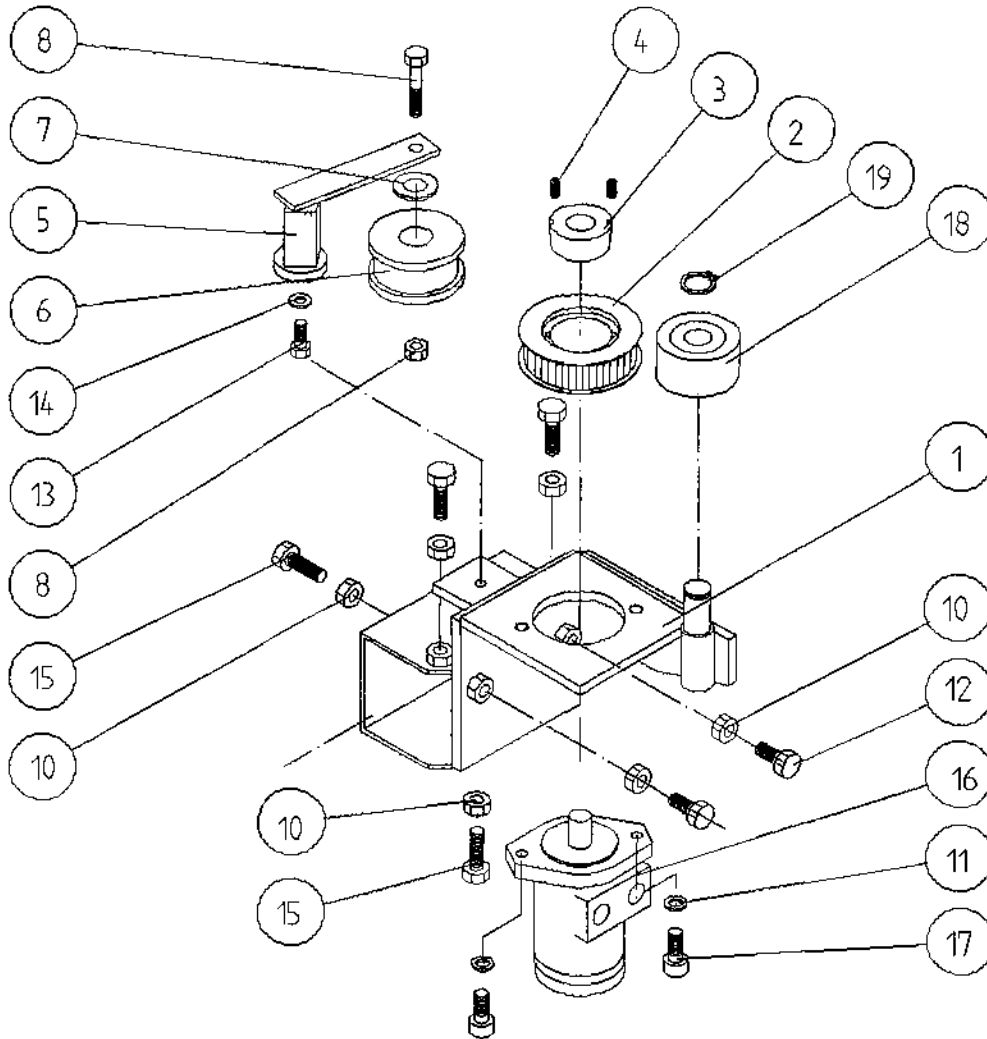
FILE NAME WD 658 PL 2

WD658-PL2

TANCO AUTOWRAP 400S8 & 500S8 MODEL (TRAILED) 1994
PARTS LIST

ITEM NO	DESCRIPTION	QTY	PART-NO
52	TURN TABLE COVER PLATE	1	WD60-093
53	BELT GUIDE ASSY	1	WD658-BG1
55	BUFFER 50MM DIA X 40MM LONG	2	Z40-20
56	M12 HEX HD SET X 40MM LONG	14	Z26-084S
57	SPACER	8	WD60-198
58	1/8" B.S.P. ST GREASE NIPPLE	4	Z39-60
59	SCREW JACK ASSEMBLY	1	WD60-JA
61	MAIN GUARD ASSY	1	WD60-MG
62	170" LONG X 1/2 PITCH X 1" WIDE TOOTHED BELT	1	Z05-02-AW2
64	BELT GUIDE ASSY	1	WD658-BG2
66	M8 HEX HD SETS X 20MM LONG	8	Z26-039S
67	M8 HEX NUTS	14	Z18-08
68	8MM DIA FLAT WASHERS (MUD FLAP)	8	Z11-02-081
69	8MM DIA SPRING WASHERS	8	Z12-02-08
71	SCRAPER	2	WD60-705
77	THRUST WASHER	2	WD60-292
78	BEARING (25MM I.D.)	4	Z06-AWRB-93
79	CIRCLIP	2	Z28-525
80	ROLLER SHAFT ASSEMBLY	2	WD60-RSA
81	10MM "D" LINCH PINS	2	Z38-03
82	M10 HEX HD SET X 35MM LONG	8	Z26-063S

TANCO AUTOWRAP 1994 MODEL HYDRAULIC MOTOR DRIVE ASSEMBLY



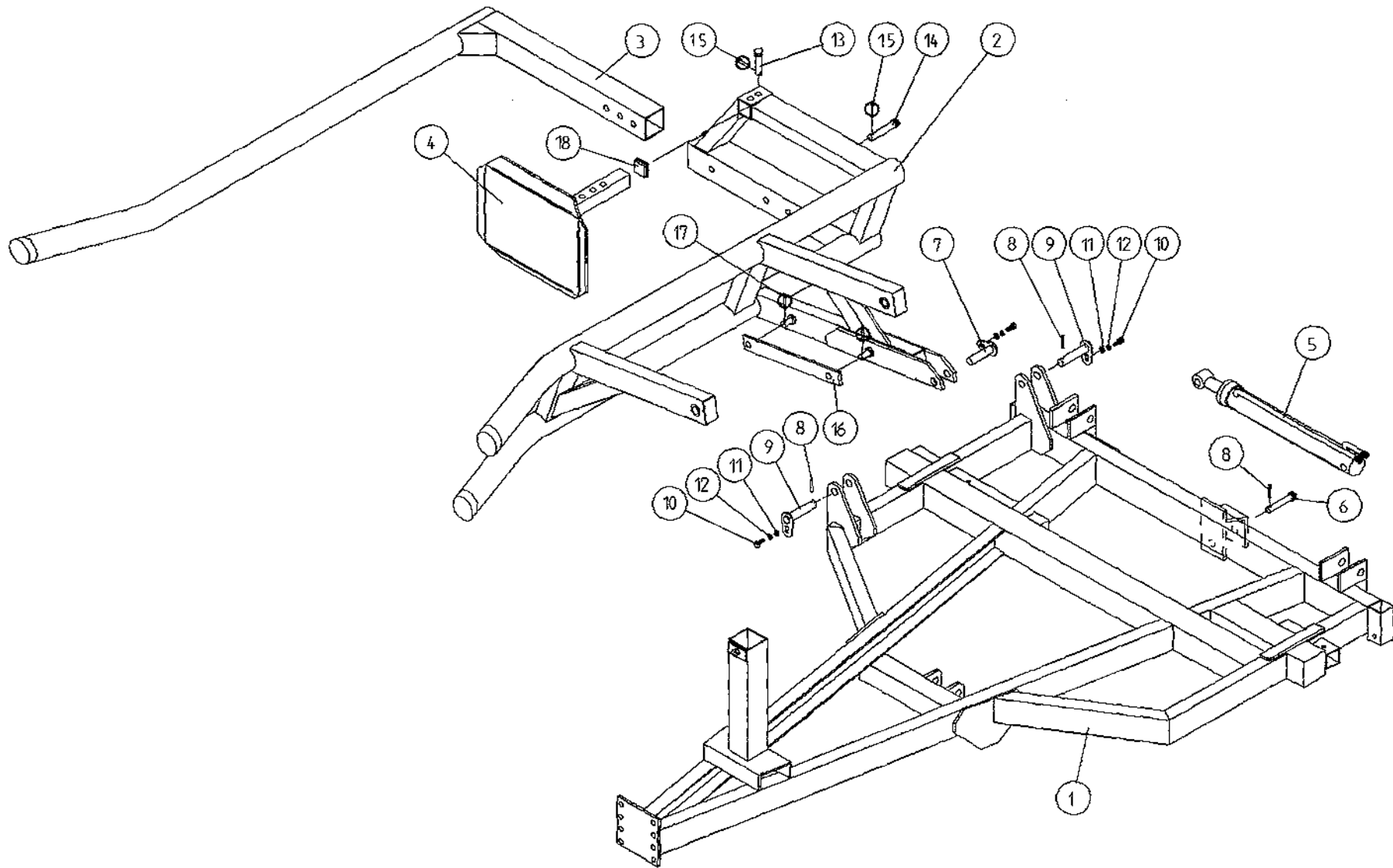
WD60-PL27

TANCO AUTOWRAP 1994 MODEL
HYDRAULIC MOTOR DRIVE ASSEMBLY

PARTS LIST

ITEM NO.	DESCRIPTION	QTY.	PART-NO.
1.	HYDRAULIC MOTOR MOUNTING ASSY.	1	WD65-HMB
2.	4" DIA X 1/2" PITCH TOOTHED PULLY	1	Z09-005-AW1
3.	TAPER LOCK BUSH TO SUIT 1" DIA SHAFT	1	Z09-005-AW2
4.	M10 STUDS X 15MM	2	Z28-01
5.	ROSTA TENSIONING UNIT ARM	1	Z06-454
6.	STEPPED ROLLER C/W BEARINGS	1	Z06-456
7.	SPACER	1	WD60-798
8.	M10 HEX HD BOLT X 60MM LONG	1	Z26-067B
9.	M10 LOCKNUT	1	Z23-10
10.	M12 HEX NUT	6	Z18-12
11.	12MM DIA SPRING WASHER	2	Z12-02-12
12.	M12 HEX HD SET X 30MM LONG	2	Z26-082S
13.	M10 HEX HD SET X 25MM LONG (TUFLOCK)	1	Z26-061S
14.	10MM DIA SPRING WASHER	1	Z12-02-10
15.	M12 HEX HD SET X 40MM LONG	6	Z26-084S
16.	HYDRAULIC MOTOR C.L.	1	Z01-02-AR75
17.	M12 SOCKET HD SCREW X 30MM LONG	2	Z13-6-12X30
18.	ROLLER C/W BEARINGS	1	Z06-457
19.	CIRCLIP	1	Z28-525

TANCO AUTOWRAP 400/500 MODELS
LIFT ARM ASSEMBLY



WD60-PL11

TANCO AUTOWRAP 400S MODEL (TRAILED) 1994

FILM DISPENSING SYSTEM

PARTS LIST

ITEM NO.	DESCRIPTION	QTY.	PART-NO
1	M10 LOCKNUTS	4	Z23-10
2	PLASTIC CAPS (TO SUIT 40 X 40 X 3 RHS)	5	Z32-07
3	DISPENSER MOUNTING (UPPER)	1	WD60-DMUH
4	FILM SPOOL ASSEMBLY	1	WD60-SPO
5	1" DIA FLANGE BEARING C/W CAM LOCK	1	Z06-48EC
6	M10 HEX HD. BOLT X 50MM LONG	4	Z26-066B
7	CONE (TOP) C/W BALL BEARINGS	1	Z06-45-01
8	CLAMP ASSEMBLY	1	WD60-DMCA
9	LEVER ASSEMBLY	1	WD60-DMLA
10	LINK ASSEMBLY	1	WD60-DMLK
11	FILM DISPENSER UNIT MK 6 (70% STRETCH)	1	D613
12	SLAVE ROLLER ASSY (PLASTIC COATED)	1	WD60-SLR
13	SLAVE ROLLER PIVOT	2	WD60-253
14	M12 HEX NUTS	6	Z18-12
15	12MM DIA SPRING WASHER	2	Z12-02-12
16	VALVE MOUNTING PLATE ASSEMBLY	1	WD65-VMP
17	1/4" DIA TENSION PIN X 3/4" LONG	1	Z03-20-062
18	DISPENSER MOUNTING (LOWER)	1	WD60-DMLH
19	M12 HEX HD BOLT X 130MM LONG	1	Z26-094B
20	M12 LOCKNUT	3	Z23-12
21	M8 HEX HD BOLT X 35MM LONG	1	Z26-042S
22	M8 LOCKNUT	1	Z23-08
23	M12 HEX HD SET X 30MM LONG	2	Z26-082S
24	M12 HEX HD BOLT X 100MM LONG	1	Z26-092B
25	CONE (BOTTOM)	1	Z06-45-02
26	CLEVIS (M10)	1	Z49-335
27	PIN (5/16" DIA) C/W CLIP	2	Z49-337
28	4MM "R" CLIP	1	Z36-02
29	8MM DUA MUD FLAP WASHER	1	Z11-02-081
30	BISSEL PIN X 110MM LONG	1	WD60-874
31	5/16" UNF HEX NUT	1	Z15-05
32	1" DIA FLANGE BEARING	1	Z06-48

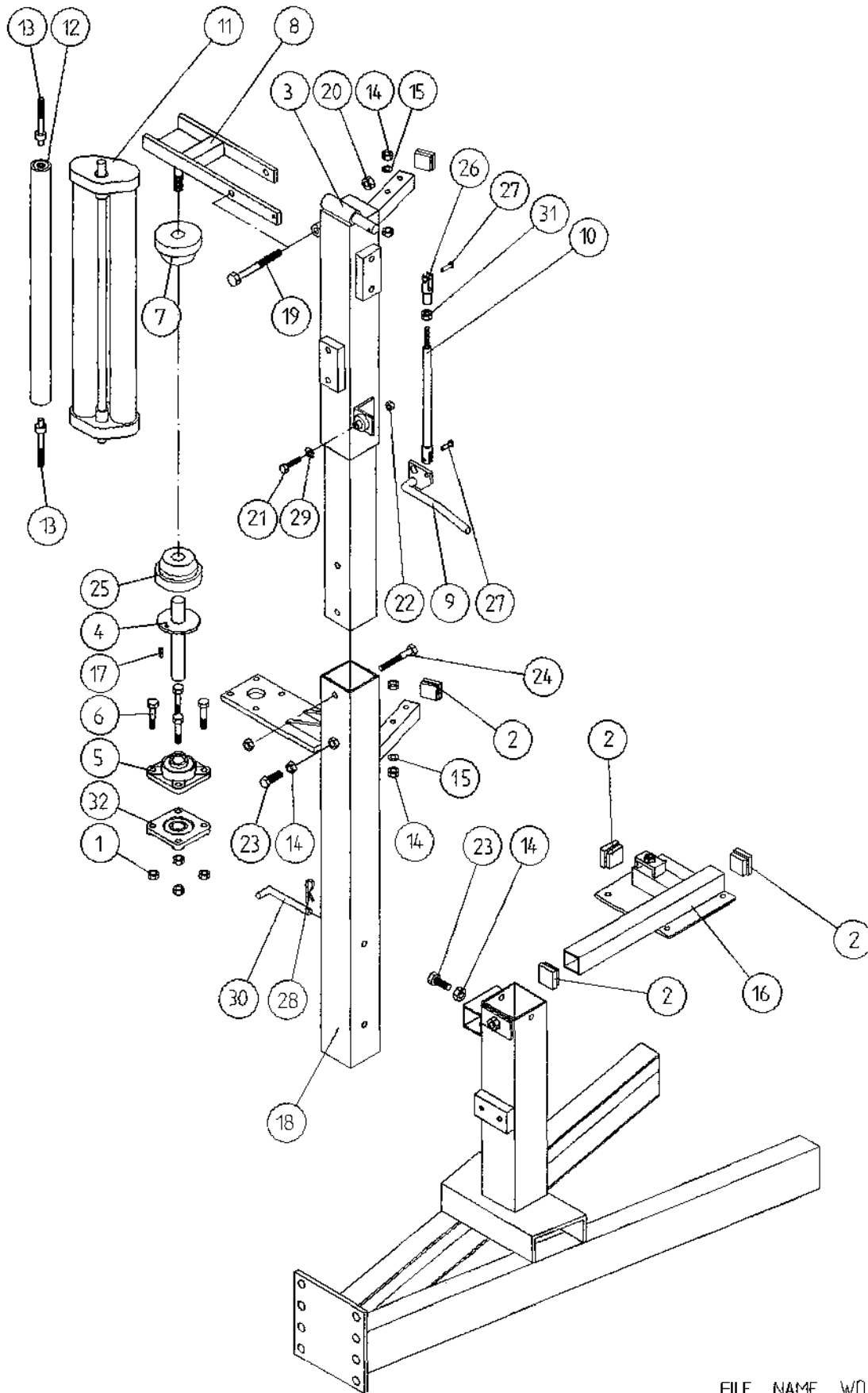
WD60-LA

TANCO AUTOWRAP 400S / 500S MODEL (TRAILED) 1994
PARTS LIST

LIFT ARM AND CHASSIS

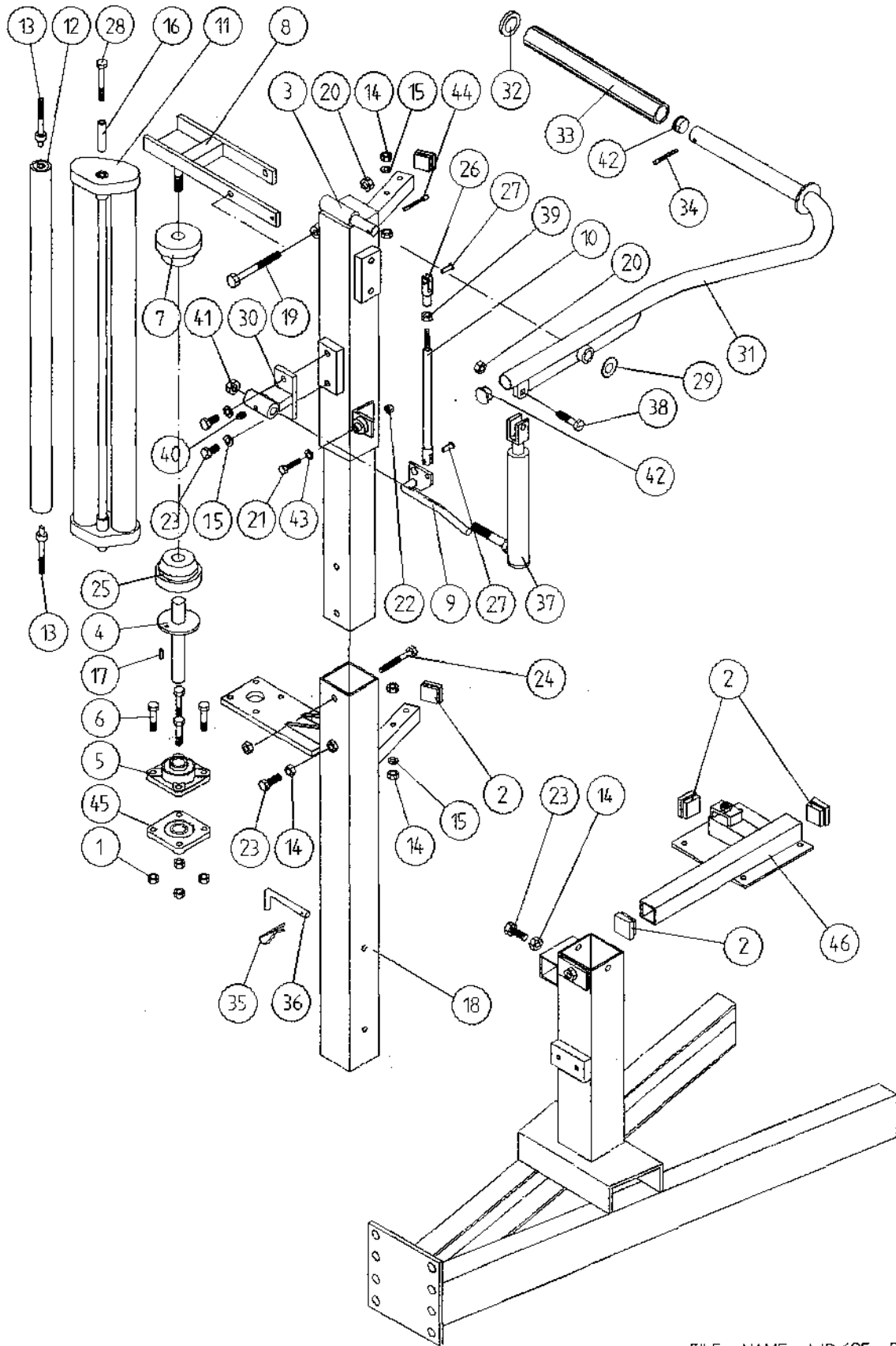
ITEM NO.	DESCRIPTION	QTY.	PART-NO.
1.	CHASSIS ASSEMBLY	1	WD60-CHA
2.	LIFT ARM ASSEMBLY	1	WD60-LA
3.	ADJUSTABLE OUTER ARM ASSY	1	WD60-LAA
4.	ADJUSTABLE BALE STOP	1	WD610-LAS
5.	HYDRAULIC RAM (LIFT ARM)	1	Z01-01-AW
6.	RAM BOTTOM PIVOT PIN	1	Z03-02-330
7.	RAM TOP PIVOT PIN	1	Z03-01-797
8.	2" x 1/4" SPLIT PINS	3	Z03-21-29
9.	LIFT ARM PIVOT C/W GREASE NIPPLE	2	Z03-01-905
10.	M10 HEX HD SET x 25mm LONG (TUFLOCK)	3	Z26-061S
11.	10mm DIA MACHINED FLAT WASHER	3	Z11-02-10
12.	10mm DIA SPRING WASHER	3	Z12-02-10
13.	SPAREX PIN	1	Z03-04-73
14.	SPAREX PIN	1	Z03-04-77
15.	7/16" DIA LINCH PINS	2	Z03-22-06
16.	SAFETY SUPPORT BAR	1	WD60-319
17.	6mm DIA LINCH PIN	2	Z03-22-03
18.	PLASTIC CAP	1	Z32-10

TANCO AUTOWRAP 400S MODEL (TRAILED) 1994
 FILM DISPENSER SYSTEM



FILE NAME WD 60-PL11

TANCO AUTOWRAP 500S (TRAILED) MODEL 1994 FILM DISPENSER SYSTEM



FILE NAME WD625-PL7

WD625-PL7
TANCO AUTOWRAP 500S MODEL (TRAILED) 1994
FILM DISPENSING SYSTEM
PARTS LIST

ITEM NO	DESCRIPTION	QTY.	PART-NO.
1	M10 LOCKNUTS	4	Z23-10
2	PLASTIC CAPS (TO SUIT 40 X 40 X 3 RHS)	5	Z32-07
3	DISPENSER MOUNTING (UPPER)	1	WD60-DMUH
4	FILM SPOOL ASSEMBLY	1	WD60-SPO
5	1" DIA FLANGE BEARING C/W CAM LOCK	1	Z06-48EC
6	M10 HEX HD. BOLT X 50MM LONG	4	Z26-066B
7	CONE (TOP) C/W BALL BEARINGS	1	Z06-45-01
8	CLAMP ASSEMBLY	1	WD60-DMCA
9	LEVER ASSEMBLY	1	WD60-DMLA
10	LINK ASSEMBLY	1	WD60-DMLK
11	FILM DISPENSER UNIT MK 8 (70% STRETCH)	1	D615
12	SLAVE ROLLER ASSY (PLASTIC COATED)	1	WD65-SLR
13	SLAVE ROLLER PIVOT	2	WD60-253
14	M12 HEX NUTS	6	Z18-12
15	12MM DIA SPRING WASHER	2	Z12-02-12
16	SLEVE	1	D52012
17	1/4" DIA TENSION PIN X 3/4" LONG	1	Z03-20-062
18	DISPENSER MOUNTING (LOWER)	1	WD60-DMLH
19	M12 HEX HD BOLT X 130MM LONG	1	Z26-094B
20	M12 LOCKNUT	3	Z23-12
21	M8 HEX HD BOLT X 35MM LONG	1	Z26-042S
22	M8 LOCKNUT	1	Z23-08
23	M12 HEX HD SET X 30MM LONG	3	Z26-082S
24	M12 HEX HD BOLT X 100MM LONG	1	Z26-092B
25	CONE (BOTTOM)	1	Z06-45-02
26	CLEVIS (M10)	1	Z49-335
27	PIN (5/16" DIA C/W CLIP	2	Z49-337
28	M10 HEX HD BOLT X 80MM LONG	1	Z26-0691B
29	3/4" DIA FLAT WASHER	1	Z10-02-19
30	FILM PULL DOWN BRACKET ASSY	1	WD65-FPDB
31	FILM PULL DOWN ARM ASSY	1	WD65-FPDA
32	RETAINING WASHER	1	WD60-859
33	ROLLER	1	WD60-866
34	2" X 1/4" SPLIT PIN	1	Z03-21-29
35	4MM "R" CLIP	1	Z36-02
36	BISSEL PIN (110MM LONG)	1	WD60-874
37	HYDRAULIC RAM	1	Z01-01-AW25
38	M12 HEX HD. SET X 50MM LONG	1	Z26-086S
39	5/16" UNF HEX NUT	1	Z15-05
40	1/8 BSP ST. GREASE NIPPLE	1	Z39-60
41	M16 LOCKNUT	1	Z23-16
42	1" GB PLASTIC CAP	2	Z32-14
43	8MM DIA MUD FLAP WASHER	1	Z11-02-081
44	1 1/2" X 3/16" SPLIT PIN	1	Z03-21-14
45	1" DIA FLANGE BEARING	1	Z06-48
46	SPOOL VALVE MOUNTING PLATE ASSEMBLY	1	WD65-VMP

FAULT FINDING

PROBLEMS.

1. Drive Belt Slipping on Drive. Tension belt with Automatic tension set to 25 - 30 degrees - see page 8. Check belt is correct pitch if it has been replaced.
2. Drive belt breaking and bottom or Top Rim coming off motor sprocket. Check that cross line relief valve is working on motor. Check motor mount for alignment. Reduce tension on Drive Belt. Check there is no vertical movement of turntable spindle - if so tighten bearing locking screws on spindle and ensure that collar is secure on spindle below bearing.
3. Film Breaking Wash off dispenser and slave rollers Change roll of film. Use recommended films only.
4. Film not wrapping evenly on bale. Adjust film mast so centre of film roll is aligned with centre of bale .
5. Film Tearing on Ramp. Check for sharp edges and remove.
6. Bale Skidding on Ramp. Fit Hessian Bag or piece of carpet to Ramp.
7. Film Dispenser not Pre-Stretching Film. Check that both Rollers turn when one is turned by hand. If not, fit new gears or replace unit.
8. Tyres coming off 4" platform Support Wheels. Replace Wheels - Reduce speed below 25 r.p.m. - Do not oil or grease path of wheels on platform.

FAULT FINDING

PROBLEMS

9. MAIN BELT MOVING SIDEWAYS

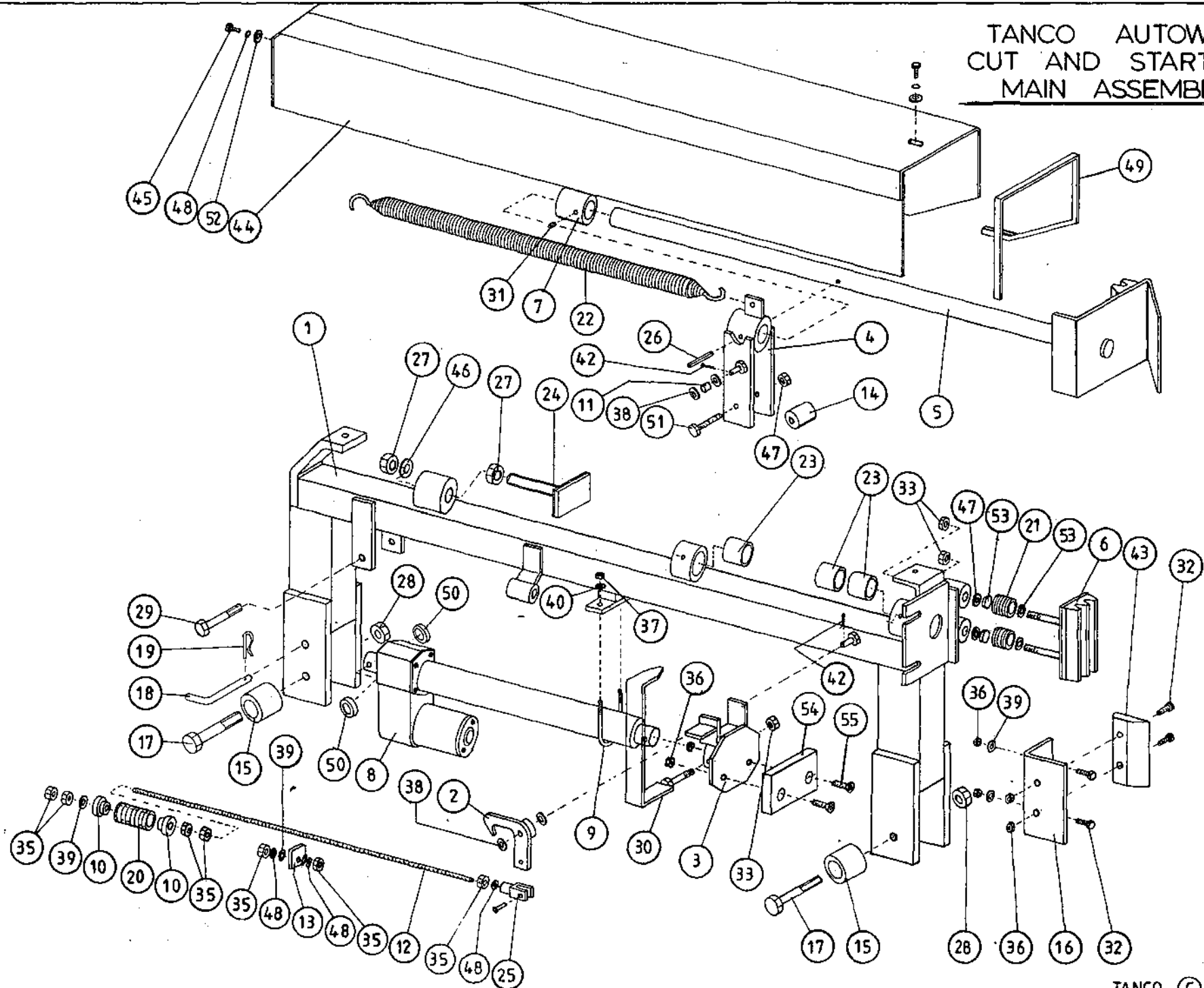
- (i) Ensure vertical rollers (plastic) are tight on the bale. Remember that the bale will reduce in size during wrapping and, on the round bales in particular, the corners will become rounded so that the bale will tend to move sideways due to centrifugal forces. Now, if the plastic rollers are too far apart, the bale will move against one of the plastic rollers whilst the belt will move in the opposite direction - so adjust the vertical plastic rollers so that they keep the bale central on the belt.
- (ii) Adjust bale stop on lift arm so that bale is loaded centrally onto platform.
- (iii) Check that both 6' rollers underneath the bale belt are running parallel to each other. Remember the golden rule - a belt will always move up a slope, so if the rollers are not parallel to each other then the belt will move to the widest setting.

NOTE:

It is important to adjust the idler roller only, as movement of the drive roller will entail adjusting the chain tension also. It is important to note if the belt moves to the same side all of the time, or if it moves first to the gearbox side and then to the other side. With the round bale wrapper, the belt will tend to move to the same side each time because the bale is always loaded the same way.

- (iv) Check that belt is the same measurement each side by running a string around the belt and measuring it. If one side is longer than the other replace the belt but if both sides are same measurement and all above adjustments fail, the try removing the belt and fitting it round the opposite way.

TANCO AUTOWRAP
 CUT AND START UNIT (1994)
 MAIN ASSEMBLY

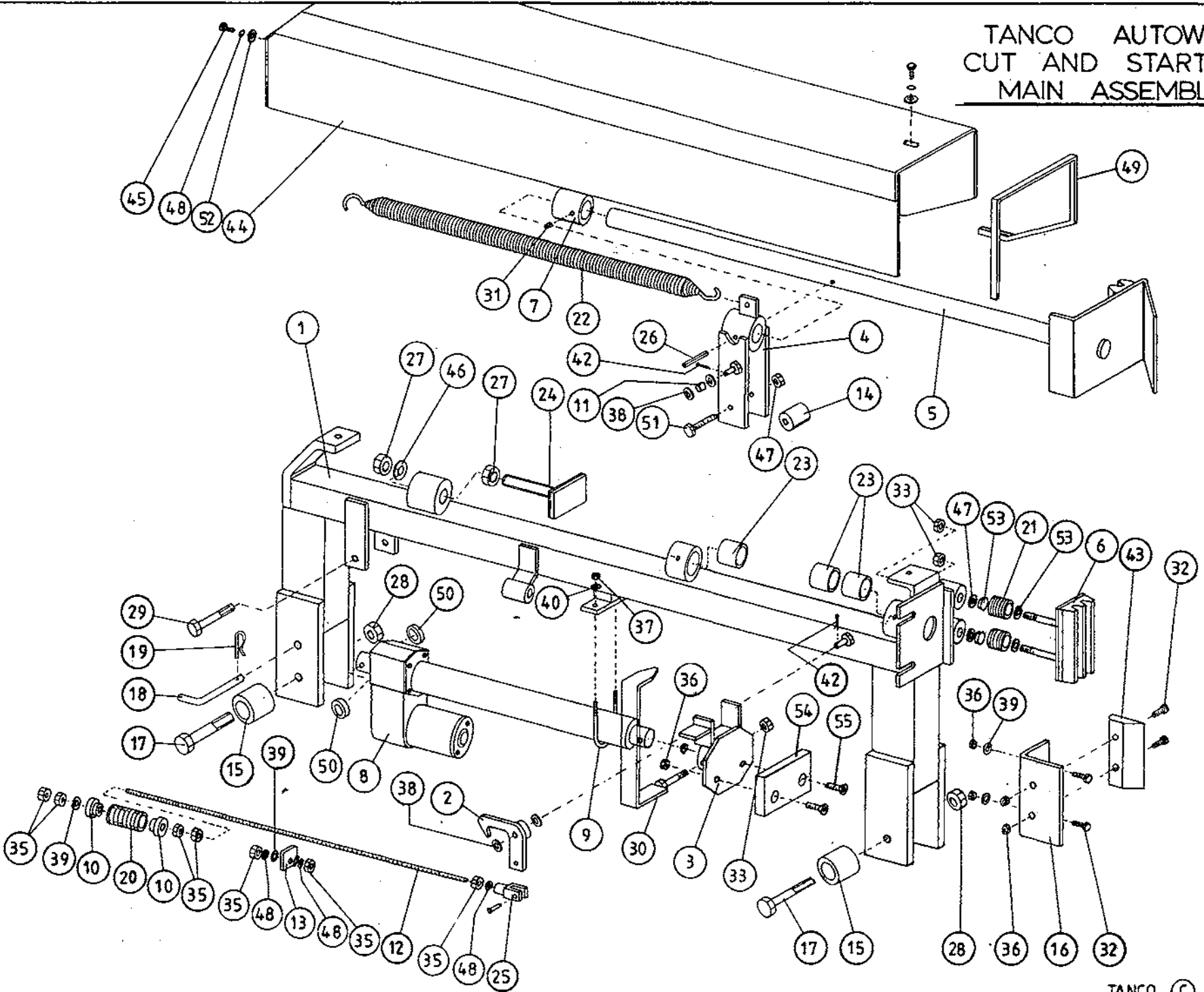


AUTOWRAP

**TANCO AUTOWRAP
CUT AND START UNIT (1994)
PARTS LIST**

ITEM NO	DESCRIPTION	QTY	PART-NO.
1.	MAIN MOUNTING FRAME ASSY	1	WD605-MF
2.	LATCH ASSY.	1	WD605-LA
3.	PUSH PLATE ASSY.	1	WD605-PP
4.	GUIDE ASSY	1	WD605-GD
5.	PLUNGER ASSY	1	WD605-PL
6.	FILM GRIPPER ASSY	1	WD605-FG
7.	PLUNGER END CAP	1	WD605-90
8.	WARNER LINEAR ACTUATOR D11 10B5 08	1	ZD605-510
9.	"U" BOLT	1	WD605-45
10.	STEPPED COLLAR	2	WD605-46
11.	SLEEVE 1/2" DIA O.D. X 13/32" DIA I.D.	1	WD605-47
12.	THREADED ROUND 5/16" UNF	1	WD605-48
13.	TRIGGER	1	WD605-50
14.	COLLAR 1" DIA BRIGHT RD. X 41.5MM LONG	1	WD605-51
15.	SPACER	1	WD605-100
16.	BLADE GUARD/MOUNTING BRACKET	1	WD605-105
17.	M12 HEX HD BOLT X 80MM LONG	2	Z26-0901B
18.	BISSEL PIN	1	Z03-22-AW100
19.	4MM "R" CLIP	1	Z36-02
20.	SPRING 16MM O.D. X 1.5MM WIRE X 48MM LONG	1	Z07-34
21.	SPRING 1.09" O.D. X 0.092" WIRE X 1.54" LONG	2	Z07-44
22.	SPRING 1.125 O.D. X 0.125" WIRE X 330MM	1	Z07-46
23.	OILITE OIL RETAINING BUSH 1 1/8" O.D. X 3/4" X 1" L.	3	Z06-105
24.	RUBBER BUFFER ASSY.	1	WD605-BA
25.	CLEVIS C/W PIN	1	Z49-33
26.	1 1/2" X 1/4" DIA TENSION PIN	1	Z03-20-07
27.	M16 HEX NUTS	2	Z18-16
28.	M12 LOCKNUTS	2	Z23-12
29.	M12 HEX HD BOLT X 65MM	1	Z26-0882B
30.	INDICATOR ASSY	1	WD605-PR
31.	M8 GRUB SCREW	1	Z28-008
32.	M8 HEX HD SET X 25MM	4	Z26-040S
33.	M12 BINX LOCKNUT	4	Z23-12BX
35.	5/16" UNF HEX NUT	7	Z15-05
36.	M8 LOCKNUT	9	Z18-08
37.	M6 LOCKNUT (NYLOCK)	2	Z23-06
38.	10MM DIA FLAT WASHER	10	Z11-02-10
39.	8MM DIA FLAT WASHER	5	Z11-02-08
40.	6MM DIA FLAT WASHER	2	Z11-02-06
42.	3MM DIA SPLIT PIN	2	Z03-21-02
43.	BLADE	1	WD605-104
44.	MAIN GUARD	1	WD605-MG
45.	M8 HEX HD SET X 20MM LONG	2	Z26-039S
46.	10MM DIA SPRING WASHER	2	Z12-02-10
47.	12MM DIA FLAT WASHER	2	Z11-02-12
48.	8M DIA SPRING WASHER	9	Z12-02-08
49.	EDGING STRIP	1	Z44-12
50.	SPACER 1" O.D. X 1/2" I.D. X 6MM LONG	2	WD605-65

TANCO AUTOWRAP
 CUT AND START UNIT (1994)
 MAIN ASSEMBLY

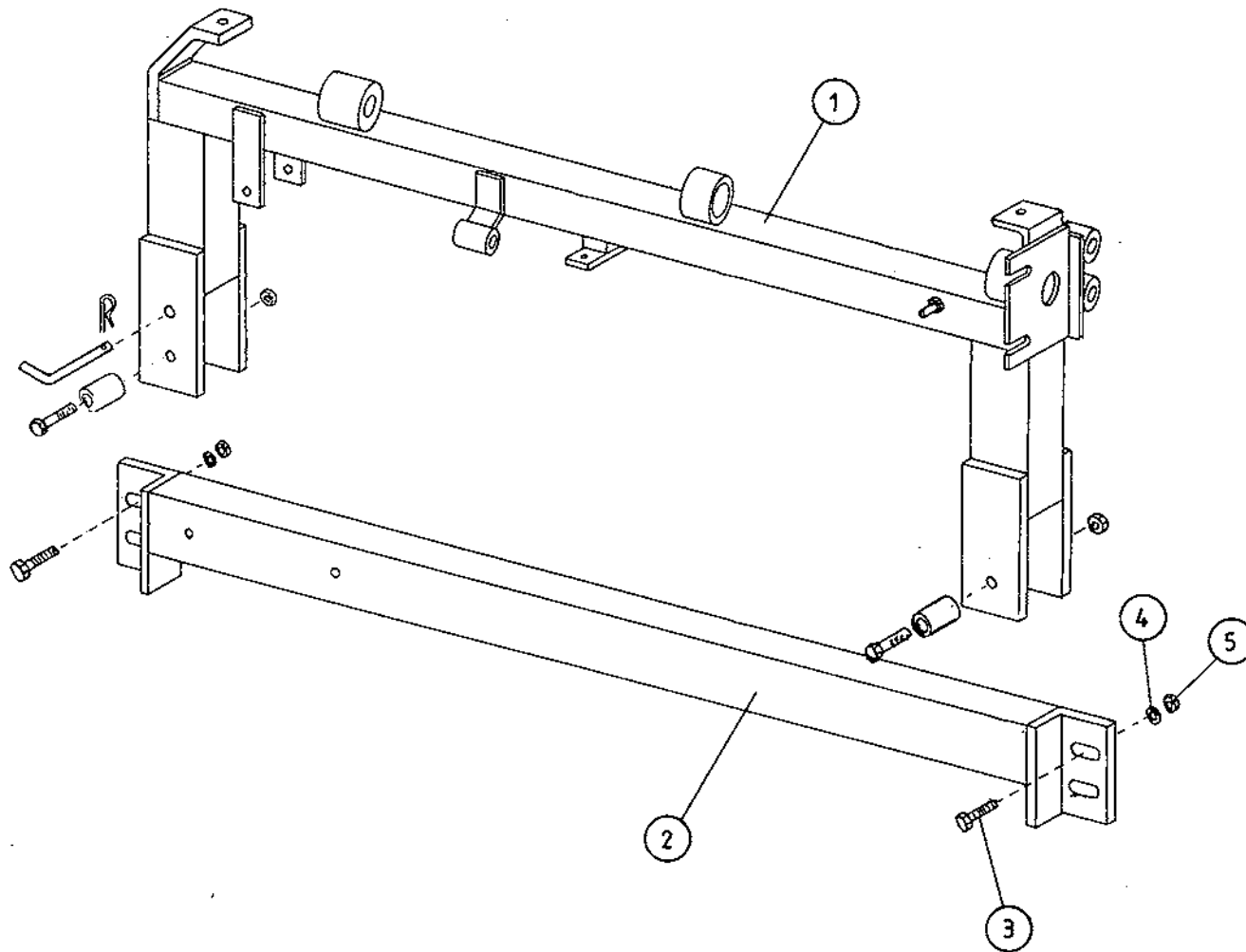


34

AUTOWRAP**TANCO AUTOWRAP
CUT AND START UNIT (199)
PARTS LIST**

ITEM NO	DESCRIPTION	QTY	PART-NO.
51.	M10 HEX HDSET X 20MM	2	Z26-060S
52.	8MM DIA FLAT WASHER 1" O.D.	4	Z11-02-081
53.	25MM O.D. X 12MM I.D. FILM GRIP WASHER	4	Z11-02-12FG
54.	PACKER	1	WD605-133
55.	H8 X 40 COUNTER SUNK BOLT	2	Z13-5-08X40

TANCO AUTOWRAP CUT AND START (1994)
MOUNTING FRAME



WD605-MF

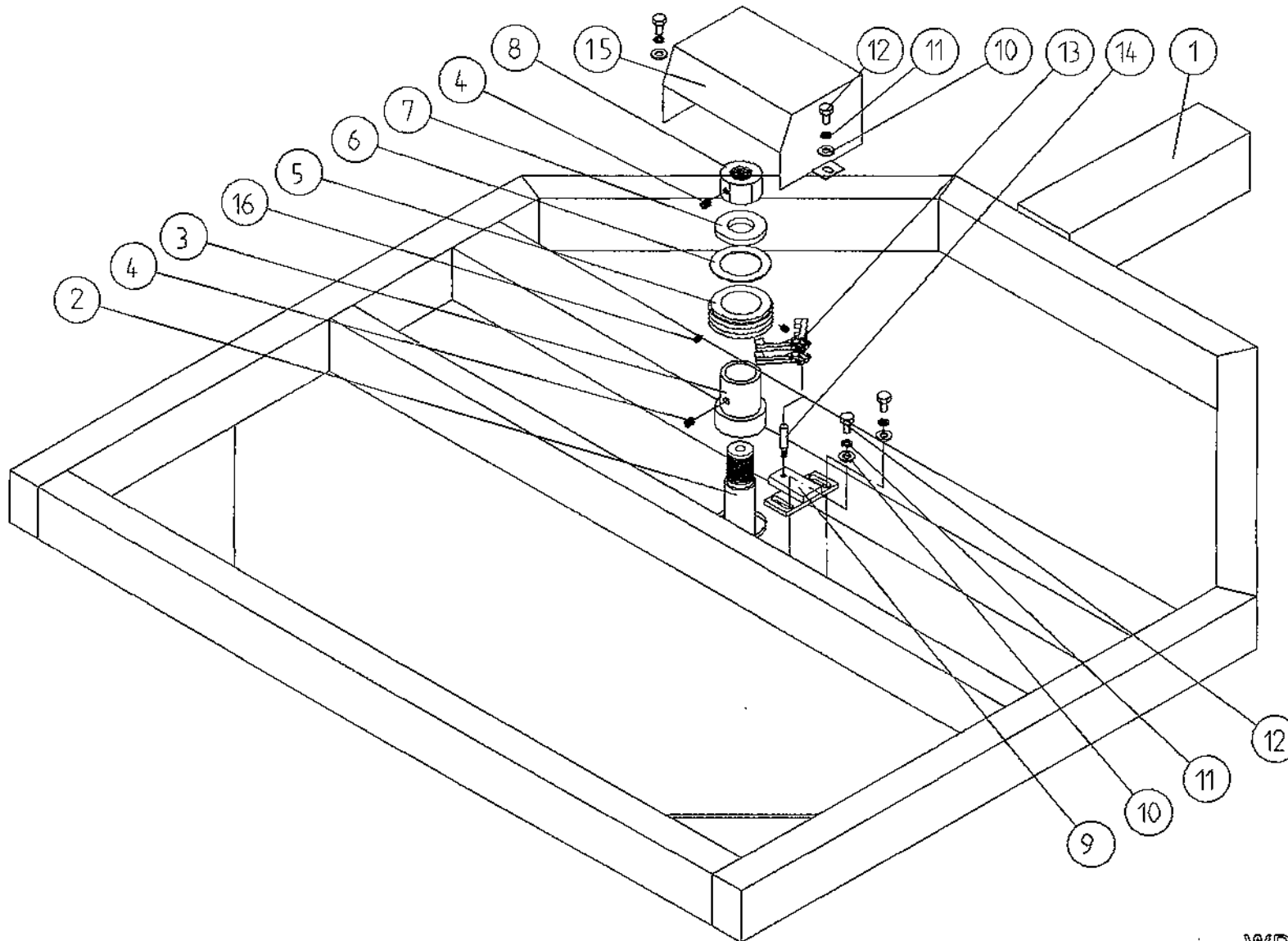
TANCO AUTOWRAP CUT AND START UNIT (1994)

MOUNTING FRAME

PARTS LIST

ITEM NO	DESCRIPTION	QTY	PART-NO
1.	MAIN MOUNTING FRAME ASSY	1	WD605-MF
2.	MAIN FRAME MOUNTING	1	WD605-MFM
3.	M10 HEX HD SET x 30mm LONG	2	Z26-062S
4.	10mm DIA SPRING WASHER	2	Z12-02-10
5.	M10 HEX NUT	2	Z18-10

TANCO AUTOWRAP - CUT AND START UNIT (1994)
SLIP RING ASSEMBLY

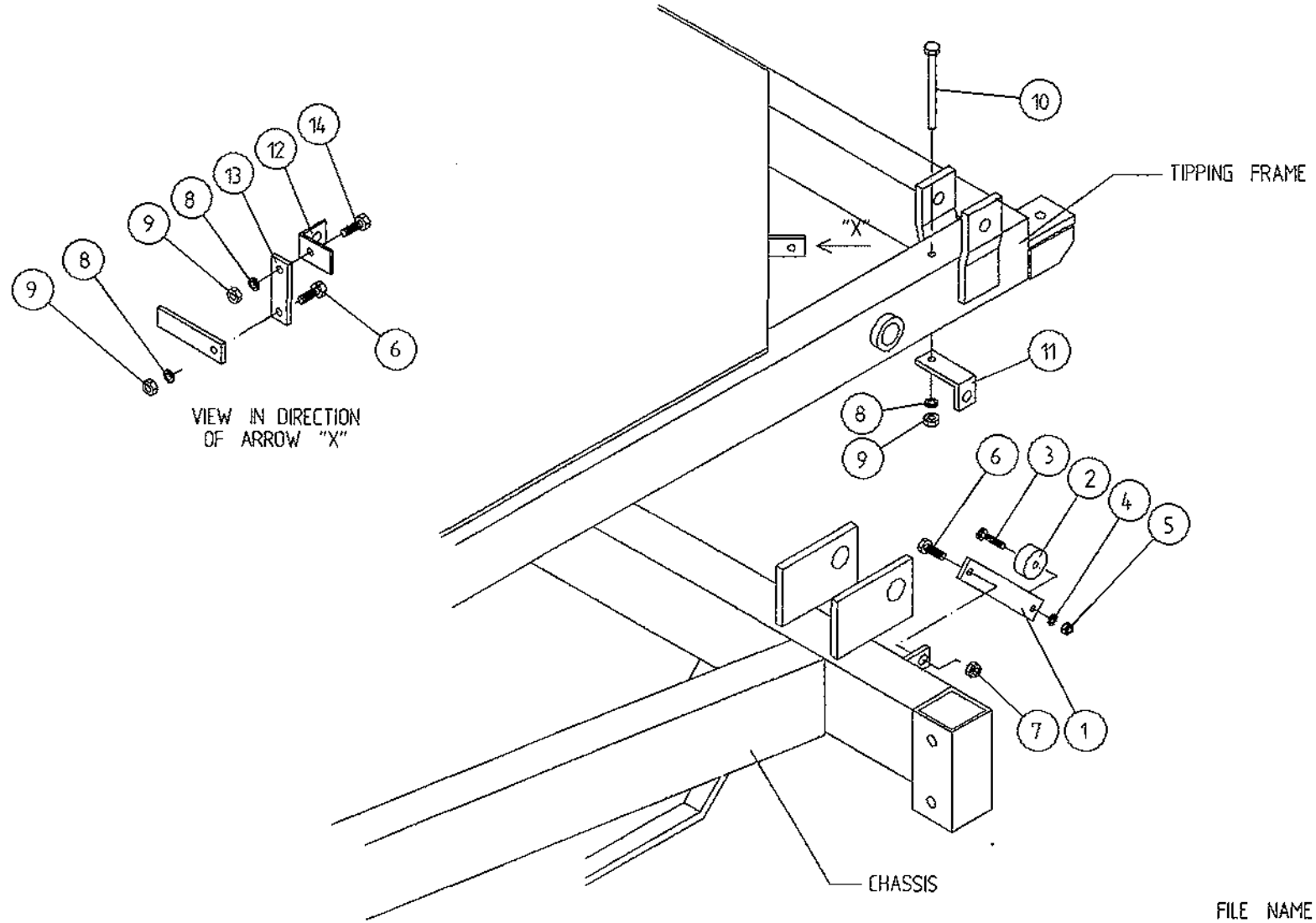


**TANCO AUTOWRAP CUT AND START UNIT (1994)
SLIP RING ASSY.**

PARTS LIST

ITEM NO.	DESCRIPTION	QTY.	PART-NO.
1.	UNDERSIDE OF TIPPING FRAME	1	
2.	TURNTABLE CENTRE SHAFT	1	WD60-768
3.	SLIP RING MOUNTING SLEEVE	1	WD60-825
4.	M8 GRUB SCREW x 6 mm LONG	2	Z28-007
5.	SLIP RING ASSY.	1	ZD605-308
6.	INSULATING RING	1	ZD605-350
7.	LOCKING COLLAR	1	WD60-770
8.	1 1/4" UNC HEX NUT	1	Z18-300
9.	SLIP RING MOUNTING BRACKET ASSY	1	WD605-SRMB
10.	10mm DIA FLAT WASHER 1" O.D.	4	Z11-02-101
11.	10mm SPRING WASHER	4	Z12-02-10
12.	M10 HEX HD SET x 20mm	4	Z26-060S
13.	BRUSHES	2	ZD605-306
14.	INSULATOR SLEEVE	1	ZD605-302
15.	SLIP RING GUARD ASSY	1	WD605-SRG
16.	M5 GRUB SCREW	2	Z28-005

TANCO AUTOWRAP
CUT AND START UNIT
SENSOR & MAGNET MOUNTING BRACKETS



TANCO AUTOWRAP CUT AND START UNIT 1994SENSOR AND MAGNET MOUNTING BRACKETSPARTS LIST

ITEM NO.	DESCRIPTION	QTY.	PART-NO.
1.	MAGNET MOUNTING BRACKET	1	WD605-57
2.	MAGNET	1	D6043
3.	M6 HEX HD SET x 30mm LONG	1	Z26-022S
4.	6mm DIA FLAT WASHER	1	Z11-02-06
5.	M6 LOCKNUT	1	Z23-06
6.	M8 HEX HD SET x 25mm LONG	2	Z26-040S
7.	M8 LOCKNUT (NYLOCK)	1	Z23-08
8.	8mm DIA SPRING WASHER	3	Z12-02-08
9.	M8 HEX NUT	3	Z18-08
10.	M8 HEX HD SET x 100mm LONG	1	Z26-057S
11.	SENSOR MOUNTING BRACKET	1	WD605-58
12.	ROTATE SENSOR MOUNTING BRACKET	1	WD605-120
13.	MOUNTING FLAT	1	WD605-07
14.	M8 HEX HD SET x 20mm LONG	1	Z26-020S

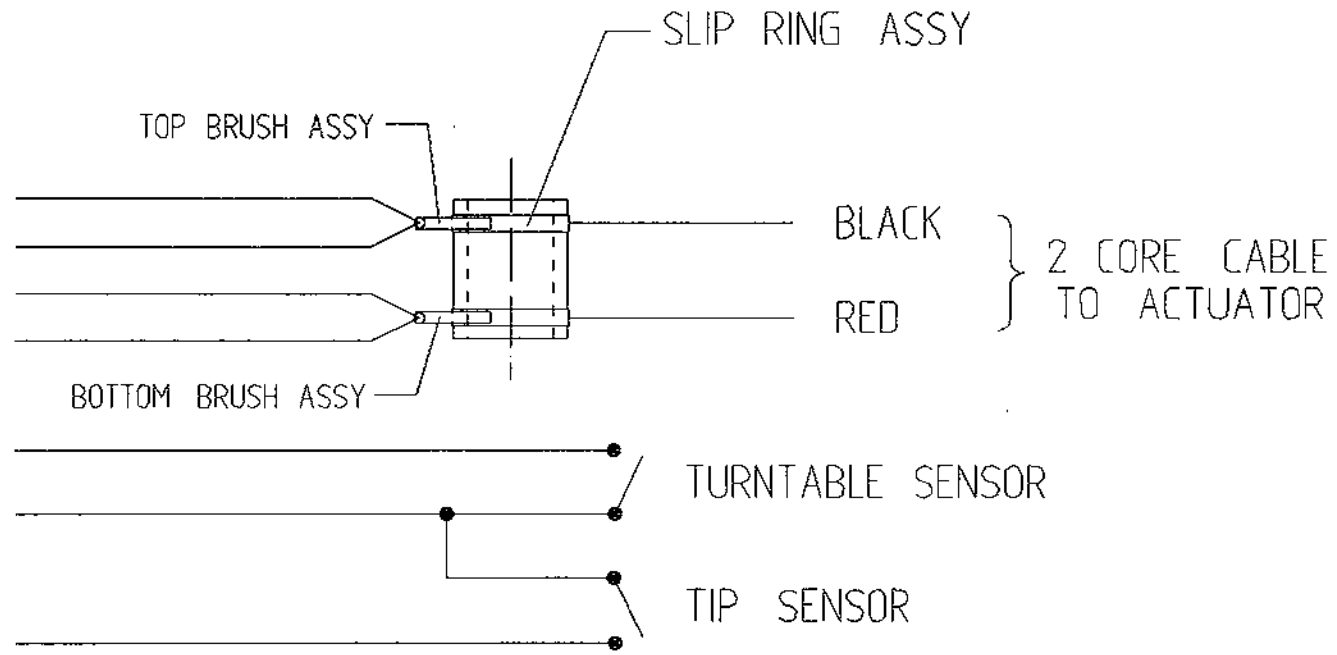
TANCO AUTOWRAP CUT AND START ELECTRICAL CIRCUIT

38

6 PIN PLUG

- PIN (6) { BLUE
 BLACK
- PIN (5) RED
- PIN (4) BROWN

- PIN (3) GREEN
- PIN (2) WHITE
- PIN (1) YELLOW



TANCO AUTOWRAP

Cut and start Fault Finding Summary.

This summary is to be read in conjunction with operators handbook.

Note: It has been found that most faults can be attributed to a bad power supply. Therefore it is essential that power supply be taken directly from battery terminals, ensuring correct polarity. Operating voltage is 10V D.C. (under load) to 13.5V D.C.

Problem

Proposed Remedy

- | | |
|--|--|
| (1) Bale Wrap monitor does not power on. | (a) Check polarity on connections to battery terminals.

(b) Check fuse, in bale wrap controller. |
| (2) Plunger does not come out after 2 revolutions of turntable. | (a) Ensure that left hand top switch is in auto mode.

(b) Check operation in manual mode to ensure that plunger travels in and out. If the plunger does not travel in and out, check all connections from six pin plug, through slip ring to linear actuator. |
| (2)(i) Buzzer sound continuously "bleep", "bleep" and bale wrap monitor does not count above 2 revs. | (c) check voltage while operating in manual mode. This voltage should be no lower than 10V D.C. (under load). Also check connections on battery terminals.

(d) Check that bale wrap monitor is counting revolutions and if not check that turntable sensor is within 6mm of magnet on turntable.

(e) Carry out continuity check on turntable sensor, by taking reading cross pins 2 & 3 in six pin plug. |

TANCO AUTOWRAP

Cut and Start
Fault Finding Summary.

- | | |
|--|--|
| (3) Plunger opens too soon and releases film. | (a) Check setting for function (1), which indicates number of turns to activate motor. This should be 2. |
| | (b) Check setting for function (7), which indicates non auto reset. This should be N. |
| (4) Plunger travels out but latch does not engage so plunger travels back in. | (a) Increase setting for function (2) which indicates the number of seconds linear actuator powers out for. Setting can be changed in increments of 0.5 sec. |
| (5) Plunger snaps closed after about 6 turntable revolutions. This is caused by the Linear Actuator not stopping in park position. | (a) Reduce setting for function (4), which indicates the number of seconds required to reverse to park position. Setting can be altered in increments of 0.5 sec. In the park position there should be 5mm to 12mm clearance between cam on push plate assy and latch trigger. |
| (6) Plunger opens while turntable rotates after buzzer sounds. | (a) Check setting for function (7) which indicates non auto reset. This should be N. |
| (7) When machine is tipped plunger does not close. | (a) Check clearance between tip sensor on back of tipping frame and magnet on 5mm to 6mm. |
| | (b) Check that tip sensor passes magnet, if not adjust magnet position. |

TANCO AUTOWRAP

Cut and Start
Fault Finding Summary

(7) (Continued)

- (c) Check that latch trigger is activated by cam on push plate assy. If not adjust trigger.
- (d) Check setting for function (5) which indicates the number of seconds from tipping signal until motor is fully closed. This should be 1.5 sec.

